

IDH3A Polyclonal Antibody

Description

Product type	Primary Antibody
Code	BT-AP04333
Host	Rabbit
Isotype	IgG
Size	20ul, 50ul, 100ul
Immunogen	Synthesized peptide derived from the Internal region of human IDH3A.
Mol wt	39592
Species reactivity	Human, Mouse, Rat
Clonality	Polyclonal
Recommended application	WB, IHC-p, ELISA
Concentration	1 mg/ml
Full name	IDH3A Antibody
Synonyms	IDH3A; Isocitrate dehydrogenase [NAD] subunit alpha, mitochondrial; Isocitric dehydrogenase subunit alpha; NAD(+)-specific ICDH subunit alpha

This product is for research use only, not for use in human, therapeutic or diagnostic procedure.

Background

Isocitrate dehydrogenases catalyze the oxidative decarboxylation of isocitrate to 2-oxoglutarate. These enzymes belong to two distinct subclasses, one of which utilizes NAD(+) as the electron acceptor and the other NADP(+). Five isocitrate dehydrogenases have been reported: three NAD(+)-dependent isocitrate dehydrogenases, which localize to the mitochondrial matrix, and two NADP(+)-dependent isocitrate dehydrogenases, one of which is mitochondrial and the other predominantly cytosolic. NAD(+)-dependent isocitrate dehydrogenases catalyze the allosterically regulated rate-limiting step of the tricarboxylic acid cycle. Each isozyme is a heterotetramer that is composed of two alpha subunits, one beta subunit, and one gamma subunit. Isocitrate dehydrogenase [NAD] subunit alpha mitochondrial encoded by IDH3A is the alpha subunit of one isozyme of NAD(+)-dependent isocitrate dehydrogenase.

Recommended Dilution

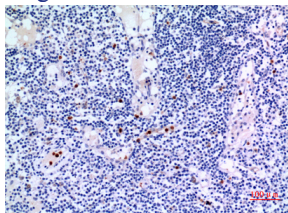
WB: 1: 500 - 1: 2000

IHC-p: 1: 100 - 1: 300

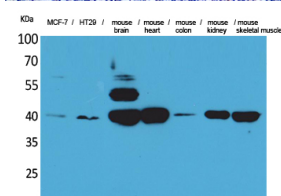
ELISA: 1: 20000

Not yet tested in other applications.

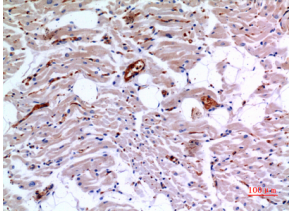
Images



Immunohistochemical analysis of paraffin-embedded human-lymph-gland, antibody was diluted at 1:100



Western Blot analysis of MCF-7, HT29, mouse brain, mouse heart, mouse colon, mouse kidney, mouse skeletal muscle cells using IDH3A Polyclonal Antibody. Secondary antibody was diluted at 1:20000



Storage

-20°C for one year

501 Changsheng S Rd, Nanhu Dist, Jiaxing, Zhejiang, China

Tel: 86 21 31007137 | E-mail: save@bt-laboratory.com | www.bt-laboratory.com