

PTPRH Rabbit Polyclonal Antibody

Description

Product type	Primary Antibody
Code	BT-AP04336
Host	Rabbit
Isotype	IgG
Size	20ul, 50ul, 100ul
Immunogen	Synthesized peptide derived from human PTPRH
Mol wt	122650
Species reactivity	Human, Rat, Mouse
Clonality	Polyclonal
Recommended application	WB
Concentration	1 mg/ml
Full name	PTPRH
Synonyms	PTPRH

This product is for research use only, not for use in human, therapeutic or diagnostic procedure.

Background

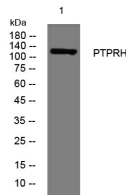
The protein encoded by this gene is a member of the protein tyrosine phosphatase (PTP) family. PTPs are known to be signaling molecules that regulate a variety of cellular processes including cell growth| differentiation| mitotic cycle| and oncogenic transformation. This PTP possesses an extracellular region| a single transmembrane region| and a single intracytoplasmic catalytic domain| and thus represents a receptor-type PTP. The extracellular region contains eight fibronectin type III-like repeats and multiple N-glycosylation sites. The gene was shown to be expressed primarily in brain and liver| and at a lower level in heart and stomach. It was also found to be expressed in several cancer cell lines| but not in the corresponding normal tissues. Alternative splicing results in multiple transcript variants.

Recommended Dilution

WB: 1: 500 - 1: 2000

Not yet tested in other applications.

Images



Western blot analysis of lysates from A549 cells, primary antibody was diluted at 1:1000, 4°C overnight

Storage

-20°C for 1 year