

IFITM3 Polyclonal Antibody

Description

Product type	Primary Antibody
Code	BT-AP04355
Host	Rabbit
Isotype	IgG
Size	20ul, 50ul, 100ul
Immunogen	The antiserum was produced against synthesized peptide derived from human IFM3. AA range:1-50
Mol wt	14632
Species reactivity	Human
Clonality	Polyclonal
Recommended application	WB, IF, ELISA
Concentration	1 mg/ml
Full name	IFITM3 Antibody
Synonyms	IFITM3; Interferon-induced transmembrane protein 3; Dispanin subfamily A member 2b; DSPA2b; Interferon-inducible protein 1-8U

This product is for research use only, not for use in human, therapeutic or diagnostic procedure.

Background

Interferon-induced transmembrane protein 3 encoded by IFITM3 is an interferon-induced membrane protein that helps confer immunity to influenza A H1N1 virus, West Nile virus and dengue virus. Two transcript variants, only one of them protein-coding, have been found for this gene. Another variant encoding an N-terminally truncated isoform has been reported, but the full-length nature of this variant has not been determined.

Recommended Dilution

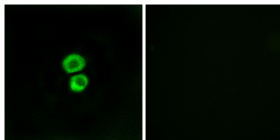
WB: 1: 500 - 1: 2000

IF: 1: 200 - 1: 1000

ELISA: 1: 40000

Not yet tested in other applications.

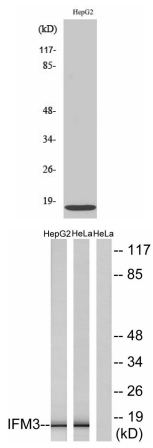
Images



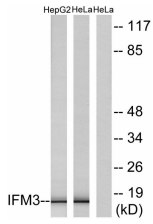
Immunofluorescence analysis of MCF7 cells, using IFM3 Antibody. The picture on the right is blocked with the synthesized peptide.



Western Blot analysis of various cells using IFITM3 Polyclonal Antibody diluted at 1:2000



Western Blot analysis of HeLa cells using IFITM3 Polyclonal Antibody diluted at 1:2000



Western blot analysis of lysates from HepG2 and HeLa cells, using IFM3 Antibody. The lane on the right is blocked with the synthesized peptide.

Storage

-20°C for one year

501 Changsheng S Rd, Nanhu Dist, Jiaxing, Zhejiang, China

Tel: 86 21 31007137 | E-mail: save@bt-laboratory.com | www.bt-laboratory.com