

IFN-Gamma Polyclonal Antibody

Description

Product type	Primary Antibody
Code	BT-AP04374
Host	Rabbit
Isotype	IgG
Size	20ul, 50ul, 100ul
Immunogen	The antiserum was produced against synthesized peptide derived from human IFN-gamma. AA range:20-69
Mol wt	19348
Species reactivity	Human, Rat, Mouse
Clonality	Polyclonal
Recommended application	WB, IHC-p, ELISA
Concentration	1 mg/ml
Full name	IFN-gamma Antibody
Synonyms	IFG; IFI; IFNG; IFNgamma; IFN-gamma; Immune interferon;ifn gamma; interferon gamma

This product is for research use only, not for use in human, therapeutic or diagnostic procedure.

Background

IFNG encodes a soluble cytokine that is a member of the type II interferon class. The encoded protein is secreted by cells of both the innate and adaptive immune systems. Interferon gamma is a homodimer that binds to the interferon gamma receptor which triggers a cellular response to viral and microbial infections. Mutations in this gene are associated with an increased susceptibility to viral, bacterial and parasitic infections and to several autoimmune diseases.

Recommended Dilution

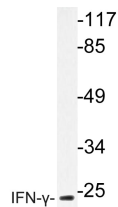
WB: 1: 500 - 1: 2000

IHC: 1: 100 - 1: 300

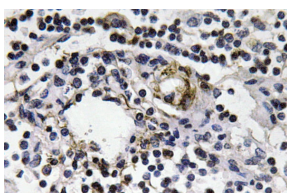
ELISA: 1: 40000

Not yet tested in other applications.

Images



Western blot analysis of lysate from HepG2 cells, using IFN- γ antibody.



Immunohistochemistry analysis of IFN- γ antibody in paraffin-embedded human lymph node tissue.



Western Blot analysis of various cells using IFN- γ Polyclonal Antibody diluted at 1:1000

Storage

-20°C for one year

501 Changsheng S Rd, Nanhu Dist, Jiaxing, Zhejiang, China

Tel: 86 21 31007137 | E-mail: save@bt-laboratory.com | www.bt-laboratory.com