

IFN-Epsilon Polyclonal Antibody

Description

Product type	Primary Antibody
Code	BT-AP04377
Host	Rabbit
Isotype	IgG
Size	20ul, 50ul, 100ul
Immunogen	The antiserum was produced against synthesized peptide derived from the C-terminal region of human IFNE. AA range:159-208
Mol wt	24414
Species reactivity	Human
Clonality	Polyclonal
Recommended application	WB, ELISA
Concentration	1 mg/ml
Full name	IFN-epsilon Antibody
Synonyms	IFNE; IFNE1; Interferon epsilon; IFN-epsilon; Interferon epsilon-1

This product is for research use only, not for use in human, therapeutic or diagnostic procedure.

Background

IFNE (Interferon, Epsilon) is a Protein Coding gene. Diseases associated with IFNE include west nile fever. Among its related pathways are PEDF Induced Signaling and Jak-STAT signaling pathway. Gene Ontology (GO) annotations related to this gene include cytokine activity and type I interferon receptor binding. An important paralog of this gene is IFNA5. Type I interferon required for maintaining basal levels of IFN-regulated genes, including 2-5-oligoadenylate synthetase, IRF7 and ISG15, in the female reproductive tract. Directly mediates protection against viral and bacterial genital infections (By similarity).

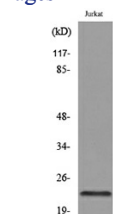
Recommended Dilution

WB: 1: 500 - 1: 2000

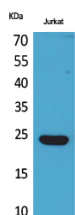
ELISA: 1: 20000

Not yet tested in other applications.

Images



Western blot analysis of lysate from Jurkat cells, using IFNE Antibody.



Western Blot analysis of Jurkat cells using IFN-ε Polyclonal Antibody. Secondary antibody was diluted at 1:20000

Storage

-20°C for one year

501 Changsheng S Rd, Nanhu Dist, Jiaxing, Zhejiang, China

Tel: 86 21 31007137 | E-mail: save@bt-laboratory.com | www.bt-laboratory.com