

IgA Polyclonal Antibody

Description

Product type	Primary Antibody
Code	BT-AP04382
Host	Rabbit
Isotype	IgG
Size	20ul, 50ul, 100ul
Immunogen	The antiserum was produced against synthesized peptide derived from human IgA. AA range:227-276
Mol wt	37655
Species reactivity	Human
Clonality	Polyclonal
Recommended application	WB, IHC-p, ELISA
Concentration	1 mg/ml
Full name	IgA Antibody
Synonyms	IGHA1; Ig alpha-1 chain C region; IGHA2; Ig alpha-2 chain C region

This product is for research use only, not for use in human, therapeutic or diagnostic procedure.

Background

IGHA1 is a Protein Coding gene. Ig alpha-1 chain C region is the major immunoglobulin class in body secretions. It may serve both to defend against local infection and to prevent access of foreign antigens to the general immunologic system. Among its related pathways are Vesicle-mediated transport and Regulation of nuclear SMAD2/3 signaling. Gene Ontology (GO) annotations related to this gene include antigen binding and immunoglobulin receptor binding. An important paralog of this gene is IGHG4.

Recommended Dilution

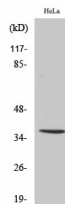
WB: 1: 500 - 1: 2000

IHC: 1: 100 - 1: 300

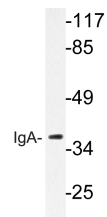
ELISA: 1: 40000

Not yet tested in other applications.

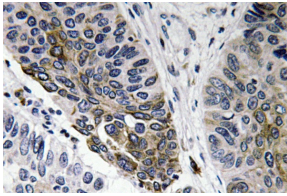
Images



Western Blot analysis of various cells using IgA Polyclonal Antibody



Western blot analysis of lysate from HeLa cells, using IgA antibody.



Immunohistochemistry analysis of IgA antibody in paraffin-embedded human lung carcinoma tissue.

Storage

-20°C for one year

501 Changsheng S Rd, Nanhu Dist, Jiaxing, Zhejiang, China

Tel: 86 21 31007137 | E-mail: save@bt-laboratory.com | www.bt-laboratory.com