

## IGFBP6 Polyclonal Antibody

### Description

<b>Product type</b>	Primary Antibody
<b>Code</b>	BT-AP04390
<b>Host</b>	Rabbit
<b>Isotype</b>	IgG
<b>Size</b>	20ul, 50ul, 100ul
<b>Immunogen</b>	The antiserum was produced against synthesized peptide derived from the Internal region of human IGFBP6. AA range:101-150
<b>Mol wt</b>	25322
<b>Species reactivity</b>	Human
<b>Clonality</b>	Polyclonal
<b>Recommended application</b>	WB, ELISA
<b>Concentration</b>	1 mg/ml
<b>Full name</b>	IGFBP6 Antibody
<b>Synonyms</b>	IGFBP6; IBP6; Insulin-like growth factor-binding protein 6; IBP-6; IGF-binding protein 6; IGFBP-6

This product is for research use only, not for use in human, therapeutic or diagnostic procedure.

### Background

IGF-binding proteins prolong the half-life of the IGFs and have been shown to either inhibit or stimulate the growth promoting effects of the IGFs on cell culture. They alter the interaction of IGFs with their cell surface receptors.

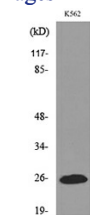
### Recommended Dilution

WB: 1: 500 - 1: 2000

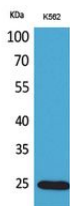
ELISA: 1: 20000

Not yet tested in other applications.

### Images



Western blot analysis of lysate from K562 cells, using IGFBP6 Antibody.



Western Blot analysis of K562 cells using IGFBP6 Polyclonal Antibody. Secondary antibody was diluted at 1:20000

### Storage

-20°C for one year

