

## IGF-I Polyclonal Antibody

### Description

Product type	Primary Antibody
Code	BT-AP04392
Host	Rabbit
Isotype	IgG
Size	20ul, 50ul, 100ul
Immunogen	The antiserum was produced against synthesized peptide derived from human IGF-I. AA range:100-149
Mol wt	17026/21841
Species reactivity	Human, Mouse, Rat
Clonality	Polyclonal
Recommended application	IHC-p, ELISA
Concentration	1 mg/ml
Full name	IGF-I Antibody
Synonyms	IBP1; IGF-IA; IGF1A; IGFI; insulin-like growth factor 1; insulin-like growth factor IA; mechano growth factor; MGF; somatomedin C

This product is for research use only, not for use in human, therapeutic or diagnostic procedure.

### Background

The protein encoded by IGF1 is similar to insulin in function and structure and is a member of a family of proteins involved in mediating growth and development. The encoded protein is processed from a precursor, bound by a specific receptor, and secreted. Defects in this gene are a cause of insulin-like growth factor I deficiency. Alternative splicing results in multiple transcript variants encoding different isoforms that may undergo similar processing to generate mature protein.

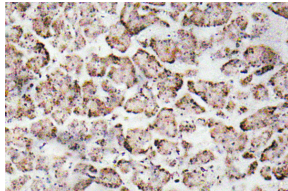
### Recommended Dilution

IHC: 1: 100 - 1: 300

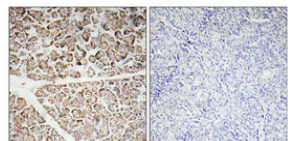
ELISA: 1: 10000

Not yet tested in other applications.

### Images



Immunohistochemistry analysis of IGF-I antibody in paraffin-embedded human pancreas tissue.



Immunohistochemical analysis of paraffin-embedded Human pancreas. Antibody was diluted at 1:100(4° overnight). High-pressure and temperature Tris-EDTA,pH8.0 was used for antigen retrieval. Negative control (right) obtained from antibody was pre-absorbed by immunogen peptide.

### Storage

-20°C for one year

