

## IgG1 Polyclonal Antibody

### Description

<b>Product type</b>	Primary Antibody
<b>Code</b>	BT-AP04405
<b>Host</b>	Rabbit
<b>Isotype</b>	IgG
<b>Size</b>	20ul, 50ul, 100ul
<b>Immunogen</b>	The antiserum was produced against synthesized peptide derived from human IgG1. AA range:196-245
<b>Mol wt</b>	36106
<b>Species reactivity</b>	Human
<b>Clonality</b>	Polyclonal
<b>Recommended application</b>	WB, IHC-p, ELISA
<b>Concentration</b>	1 mg/ml
<b>Full name</b>	IgG1 Antibody
<b>Synonyms</b>	IGHG1; Ig gamma-1 chain C region

This product is for research use only, not for use in human, therapeutic or diagnostic procedure.

### Background

IGHG1 (Immunoglobulin Heavy Constant Gamma 1 (G1m Marker) is a Protein Coding gene. Diseases associated with IGHG1 include chronic lymphocytic leukemia and heavy chain deposition disease. Among its related pathways are Creation of C4 and C2 activators and Regulation of actin dynamics for phagocytic cup formation. GO annotations related to this gene include antigen binding. An important paralog of this gene is IGHG4.

### Recommended Dilution

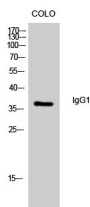
WB: 1: 500 - 1: 2000

IHC: 1: 100 - 1: 300

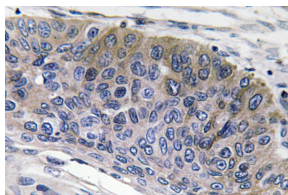
ELISA: 1: 40000

Not yet tested in other applications.

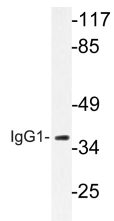
### Images



Western Blot analysis of colo cells using IgG1 Polyclonal Antibody diluted at 1:500



Immunohistochemistry analysis of IgG1 antibody in paraffin-embedded human lung carcinoma tissue.



Western blot analysis of lysate from LOVO cells, using IgG1 antibody.

### Storage

-20°C for one year

501 Changsheng S Rd, Nanhu Dist, Jiaxing, Zhejiang, China

Tel: 86 21 31007137 | E-mail: [save@bt-laboratory.com](mailto:save@bt-laboratory.com) | [www.bt-laboratory.com](http://www.bt-laboratory.com)