

RBM8A Rabbit Polyclonal Antibody

Description

Product type	Primary Antibody
Code	BT-AP04409
Host	Rabbit
Isotype	IgG
Size	20ul, 50ul, 100ul
Immunogen	Synthesized peptide derived from human RBM8A
Mol wt	19140
Species reactivity	Human, Mouse, Rat
Clonality	Polyclonal
Recommended application	WB
Concentration	1 mg/ml
Full name	RBM8A
Synonyms	RBM8A

This product is for research use only, not for use in human, therapeutic or diagnostic procedure.

Background

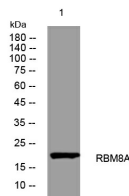
This gene encodes a protein with a conserved RNA-binding motif. The protein is found predominantly in the nucleus although it is also present in the cytoplasm. It is preferentially associated with mRNAs produced by splicing including both nuclear mRNAs and newly exported cytoplasmic mRNAs. It is thought that the protein remains associated with spliced mRNAs as a tag to indicate where introns had been present thus coupling pre- and post-mRNA splicing events. Previously it was thought that two genes encode this protein RBM8A and RBM8B; it is now thought that the RBM8B locus is a pseudogene. There are two alternate translation start codons with this gene which result in two forms of the protein. An allele mutation and a low-frequency noncoding single-nucleotide polymorphism (SNP) in this gene cause thrombocytopenia-absent radius (TAR) syndrome.

Recommended Dilution

WB: 1: 500 - 1: 2000

Not yet tested in other applications.

Images



Western blot analysis of lysates from 293T cells, primary antibody was diluted at 1:1000, 4°C overnight

Storage

-20°C for 1 year