

IGSF4B Polyclonal Antibody

Description

Product type	Primary Antibody
Code	BT-AP04410
Host	Rabbit
Isotype	IgG
Size	20ul, 50ul, 100ul
Immunogen	The antiserum was produced against synthesized peptide derived from human CADM3. AA range:141-190
Mol wt	43300
Species reactivity	Human, Mouse, Rat
Clonality	Polyclonal
Recommended application	WB, IHC-p, IF, ELISA
Concentration	1 mg/ml
Full name	IGSF4B Antibody
Synonyms	CADM3; IGSF4B; NECL1; SYNCAM3; TSLL1; Cell adhesion molecule 3; Brain immunoglobulin receptor; Immunoglobulin superfamily member 4B; IGSF4B; Nectin-like protein 1; NECL-1; Synaptic cell adhesion molec

This product is for research use only, not for use in human, therapeutic or diagnostic procedure.

Background

CADM3 (Cell Adhesion Molecule 3) is a Protein Coding gene. Among its related pathways are Cell adhesion molecules (CAMs) and Cell junction organization. GO annotations related to this gene include protein homodimerization activity. An important paralog of this gene is CRTAM.

Recommended Dilution

WB: 1: 500 - 1: 2000

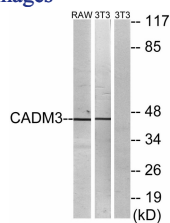
IHC: 1: 100 - 1: 300

IF: 1: 200 - 1: 1000

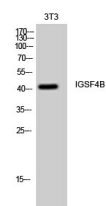
ELISA: 1: 5000

Not yet tested in other applications.

Images



Western blot analysis of lysates from NIH/3T3 and RAW264.7 cells, using CADM3 Antibody. The lane on the right is blocked with the synthesized peptide.



Western Blot analysis of 3T3 cells using IGSF4B Polyclonal Antibody

Storage

-20°C for one year

501 Changsheng S Rd, Nanhu Dist, Jiaxing, Zhejiang, China

Tel: 86 21 31007137 | E-mail: save@bt-laboratory.com | www.bt-laboratory.com