

IGSF4C Polyclonal Antibody

Description

Product type	Primary Antibody
Code	BT-AP04411
Host	Rabbit
Isotype	IgG
Size	20ul, 50ul, 100ul
Immunogen	The antiserum was produced against synthesized peptide derived from human CADM4. AA range:339-388
Mol wt	42785
Species reactivity	Human, Mouse, Rat
Clonality	Polyclonal
Recommended application	WB, IHC-p, IF, ELISA
Concentration	1 mg/ml
Full name	IGSF4C Antibody
Synonyms	CADM4; IGSF4C; NECL4; TSLL2; Cell adhesion molecule 4; Immunoglobulin superfamily member 4C; IgSF4C; Nectin-like protein 4; NECL-4; TSLC1-like protein 2

This product is for research use only, not for use in human, therapeutic or diagnostic procedure.

Background

Involved in the cell-cell adhesion. Has calcium- and magnesium-independent cell-cell adhesion activity. May have tumor-suppressor activity.

Recommended Dilution

WB: 1: 500 - 1: 2000

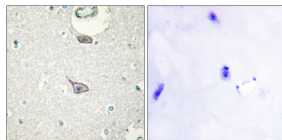
IHC: 1: 100 - 1: 300

IF: 1: 200 - 1: 1000

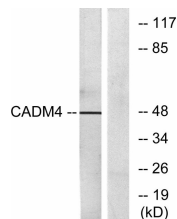
ELISA: 1: 20000

Not yet tested in other applications.

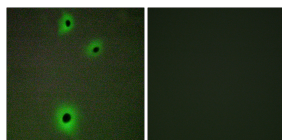
Images



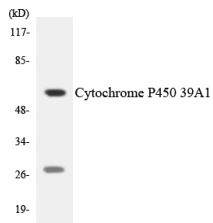
Immunohistochemistry analysis of paraffin-embedded human brain tissue, using CADM4 Antibody. The picture on the right is blocked with the synthesized peptide.



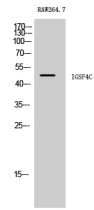
Western blot analysis of lysates from RAW264.7 cells, using CADM4 Antibody. The lane on the right is blocked with the synthesized peptide.



Immunofluorescence analysis of A549 cells, using CADM4 Antibody. The picture on the right is blocked with the synthesized peptide.



Western blot analysis of the lysates from HeLa cells using Cytochrome P450 39A1 antibody.



Western Blot analysis of RAW264.7 cells using IGSF4C Polyclonal Antibody

Storage

-20°C for one year

501 Changsheng S Rd, Nanhu Dist, Jiaxing, Zhejiang, China

Tel: 86 21 31007137 | E-mail: save@bt-laboratory.com | www.bt-laboratory.com