

IK Polyclonal Antibody

Description

Product type	Primary Antibody
Code	BT-AP04415
Host	Rabbit
Isotype	IgG
Size	20ul, 50ul, 100ul
Immunogen	The antiserum was produced against synthesized peptide derived from human RED. AA range:508-557
Mol wt	65630
Species reactivity	Human, Mouse, Rat
Clonality	Polyclonal
Recommended application	WB, IHC-p, ELISA
Concentration	1 mg/ml
Full name	IK Antibody
Synonyms	IK; RED; RER; Protein Red; Cytokine IK; IK factor; Protein RER

This product is for research use only, not for use in human, therapeutic or diagnostic procedure.

Background

Protein Red encoded by IK was identified by its RED repeat, a stretch of repeated arginine, glutamic acid and aspartic acid residues. Protein Red localizes to discrete dots within the nucleus, excluding the nucleolus. Its function is unknown. IK maps to chromosome 5; however, a pseudogene may exist on chromosome 2.

Recommended Dilution

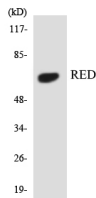
WB: 1: 500 - 1: 2000

IHC: 1: 100 - 1: 300

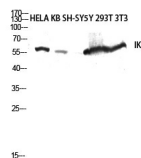
ELISA: 1: 20000

Not yet tested in other applications.

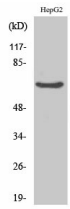
Images



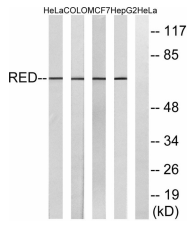
Western blot analysis of the lysates from 293 cells using RED antibody.



Western blot analysis of HELA KB SH-SY5Y 293T 3T3 lysis using IK antibody. Antibody was diluted at 1:2000 cells nucleus.



Western Blot analysis of various cells using IK Polyclonal Antibody diluted at 1:2000 cells nucleus.



Western blot analysis of lysates from HepG2, MCF-7, COLO, and HeLa cells, using RED Antibody. The lane on the right is blocked with the synthesized peptide.

Storage

-20°C for one year

501 Changsheng S Rd, Nanhu Dist, Jiaxing, Zhejiang, China

Tel: 86 21 31007137 | E-mail: save@bt-laboratory.com | www.bt-laboratory.com