

IKK Alpha/Beta Polyclonal Antibody

Description

Product type	Primary Antibody
Code	BT-AP04421
Host	Rabbit
Isotype	IgG
Size	20ul, 50ul, 100ul
Immunogen	The antiserum was produced against synthesized peptide derived from human IKK-alpha/beta. AA range:141-190
Mol wt	84654/86564
Species reactivity	Human, Mouse, Rat
Clonality	Polyclonal
Recommended application	WB, IHC-p, ELISA
Concentration	1 mg/ml
Full name	IKKAlpha/beta Antibody
Synonyms	CHUK; IKKA; TCF16; Inhibitor of nuclear factor kappa-B kinase subunit alpha; I-kappa-B kinase alpha; IKK-A; IKK-alpha; IkbKA; IkappaB kinase; Conserved helix-loop-helix ubiquitous kinase; I-kappa-B ki

This product is for research use only, not for use in human, therapeutic or diagnostic procedure.

Background

CHUK encodes a member of the serine/threonine protein kinase family. Inhibitor of nuclear factor kappa-B kinase subunit alpha, a component of a cytokine-activated protein complex that is an inhibitor of the essential transcription factor NF-kappa-B complex, phosphorylates sites that trigger the degradation of the inhibitor via the ubiquitination pathway, thereby activating the transcription factor.

Recommended Dilution

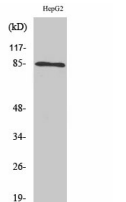
WB: 1: 500 - 1: 2000

IHC: 1: 100 - 1: 300

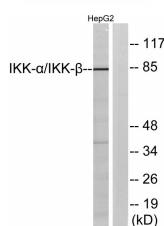
ELISA: 1: 20000

Not yet tested in other applications.

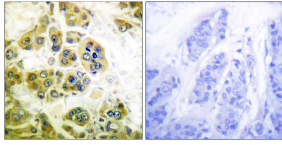
Images



Western Blot analysis of various cells using IKK α/β Polyclonal Antibody



Western blot analysis of lysates from HepG2 cells, using IKK-alpha/beta Antibody. The lane on the right is blocked with the synthesized peptide.



Immunohistochemistry analysis of paraffin-embedded human breast carcinoma tissue, using IKK-alpha/beta Antibody. The picture on the right is blocked with the synthesized peptide.

Storage

-20°C for one year

501 Changsheng S Rd, Nanhu Dist, Jiaxing, Zhejiang, China

Tel: 86 21 31007137 | E-mail: save@bt-laboratory.com | www.bt-laboratory.com