

IL-10R Alpha Polyclonal Antibody

Description

Product type	Primary Antibody
Code	BT-AP04431
Host	Rabbit
Isotype	IgG
Size	20ul, 50ul, 100ul
Immunogen	The antiserum was produced against synthesized peptide derived from human IL-10R alpha. AA range:462-511
Mol wt	62904
Species reactivity	Human
Clonality	Polyclonal
Recommended application	WB, IF, ELISA
Concentration	1 mg/ml
Full name	IL-10Ralpha Antibody
Synonyms	IL10RA; IL10R; Interleukin-10 receptor subunit alpha; IL-10 receptor subunit alpha; IL-10R subunit alpha; IL-10RA; CDw210a; Interleukin-10 receptor subunit 1; IL-10R subunit 1; IL-10R1; CD antigen CD2

This product is for research use only, not for use in human, therapeutic or diagnostic procedure.

Background

Interleukin-10 receptor subunit alpha encoded by IL10RA is a receptor for interleukin 10. Interleukin-10 receptor subunit alpha is structurally related to interferon receptors. It has been shown to mediate the immunosuppressive signal of interleukin 10, and thus inhibits the synthesis of proinflammatory cytokines. This receptor is reported to promote survival of progenitor myeloid cells through the insulin receptor substrate-2/PI 3-kinase/AKT pathway. Activation of this receptor leads to tyrosine phosphorylation of JAK1 and TYK2 kinases. Two transcript variants, one protein-coding and the other not protein-coding, have been found for this gene.

Recommended Dilution

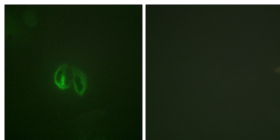
WB: 1: 500 - 1: 2000

IF: 1: 200 - 1: 1000

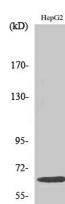
ELISA: 1: 10000

Not yet tested in other applications.

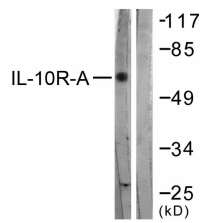
Images



Immunofluorescence analysis of HepG2 cells, using IL-10R alpha Antibody. The picture on the right is blocked with the synthesized peptide.



Western Blot analysis of various cells using IL-10R α Polyclonal Antibody



Western blot analysis of lysates from HepG2 cells, treated with Na_2VO_3 0.3nM 40', using IL-10R alpha Antibody. The lane on the right is blocked with the synthesized peptide.

Storage

-20°C for one year

501 Changsheng S Rd, Nanhu Dist, Jiaxing, Zhejiang, China

Tel: 86 21 31007137 | E-mail: save@bt-laboratory.com | www.bt-laboratory.com