

## IL-15R Alpha Polyclonal Antibody

### Description

<b>Product type</b>	Primary Antibody
<b>Code</b>	BT-AP04444
<b>Host</b>	Rabbit
<b>Isotype</b>	IgG
<b>Size</b>	20ul, 50ul, 100ul
<b>Immunogen</b>	The antiserum was produced against synthesized peptide derived from human IL15RA. AA range:99-148
<b>Mol wt</b>	28233
<b>Species reactivity</b>	Human, Rat
<b>Clonality</b>	Polyclonal
<b>Recommended application</b>	WB, ELISA
<b>Concentration</b>	1 mg/ml
<b>Full name</b>	IL-15Ralpha Antibody
<b>Synonyms</b>	IL15RA; Interleukin-15 receptor subunit alpha; IL-15 receptor subunit alpha; IL-15R-alpha; IL-15RA; CD antigen CD215

**This product is for research use only, not for use in human, therapeutic or diagnostic procedure.**

### Background

IL15RA encodes a cytokine receptor that specifically binds interleukin 15 (IL15) with high affinity. The receptors of IL15 and IL2 share two subunits, IL2R beta and IL2R gamma. This forms the basis of many overlapping biological activities of IL15 and IL2. The protein encoded by this gene is structurally related to IL2R alpha, an additional IL2-specific alpha subunit necessary for high affinity IL2 binding. Unlike IL2RA, IL15RA is capable of binding IL15 with high affinity independent of other subunits, which suggests distinct roles between IL15 and IL2. This receptor is reported to enhance cell proliferation and expression of apoptosis inhibitor BCL2L1/BCL2-XL and BCL2. Multiple alternatively spliced transcript variants of this gene have been reported.

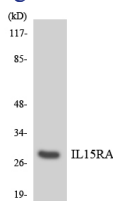
### Recommended Dilution

WB: 1: 500 - 1: 2000

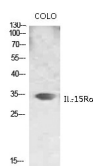
ELISA: 1: 40000

Not yet tested in other applications.

### Images

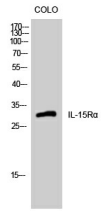


Western blot analysis of the lysates from HeLa cells using IL15RA antibody.

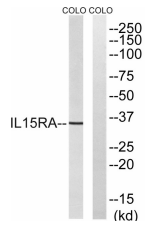


Western blot analysis of various lysis using IL-15R $\alpha$  Polyclonal Antibody. Secondary antibody was diluted at 1:20000

### Western Blot analysis of COLO cells using IL-15R $\alpha$ Polyclonal Antibody



Western blot analysis of lysates from COLO cells, using IL15RA Antibody. The lane on the right is blocked with the synthesized peptide.



### Storage

-20°C for one year

501 Changsheng S Rd, Nanhu Dist, Jiaxing, Zhejiang, China

Tel: 86 21 31007137 | E-mail: [save@bt-laboratory.com](mailto:save@bt-laboratory.com) | [www.bt-laboratory.com](http://www.bt-laboratory.com)