

IL-16 Polyclonal Antibody

Description

Product type	Primary Antibody
Code	BT-AP04447
Host	Rabbit
Isotype	IgG
Size	20ul, 50ul, 100ul
Immunogen	The antiserum was produced against synthesized peptide derived from the C-terminal region of human IL16. AA range:1281-1330
Mol wt	66646
Species reactivity	Human
Clonality	Polyclonal
Recommended application	WB, IHC-p, ELISA
Concentration	1 mg/ml
Full name	IL-16 Antibody
Synonyms	IL16; Pro-interleukin-16

This product is for research use only, not for use in human, therapeutic or diagnostic procedure.

Background

Pro-interleukin-16 encoded by IL16 is a pleiotropic cytokine that functions as a chemoattractant, a modulator of T cell activation, and an inhibitor of HIV replication. The signaling process of this cytokine is mediated by CD4. The product of this gene undergoes proteolytic processing, which is found to yield two functional proteins. The cytokine function is exclusively attributed to the secreted C-terminal peptide, while the N-terminal product may play a role in cell cycle control. Caspase 3 is reported to be involved in the proteolytic processing of this protein. Alternate splicing results in multiple transcript variants.

Recommended Dilution

WB: 1: 500 - 1: 2000

IHC-p: 1: 100 - 300

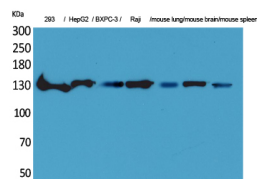
ELISA: 1: 20000

Not yet tested in other applications.

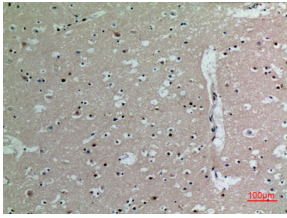
Images



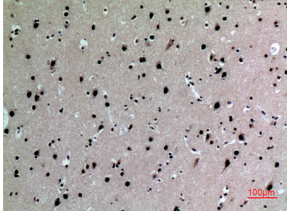
Western blot analysis of lysate from 293 cells, using IL16 Antibody.



Western Blot analysis of 293, HepG2, BXP-3, Raji, mouse lung, mouse brain, mouse spleen cells using IL-16 Polyclonal Antibody. Secondary antibody was diluted at 1:20000



Immunohistochemical analysis of paraffin-embedded human-brain, antibody was diluted at 1:100



Immunohistochemical analysis of paraffin-embedded human-brain, antibody was diluted at 1:100

Storage

-20°C for one year

501 Changsheng S Rd, Nanhu Dist, Jiaxing, Zhejiang, China

Tel: 86 21 31007137 | E-mail: save@bt-laboratory.com | www.bt-laboratory.com