

RFX4 Rabbit Polyclonal Antibody

Description

Product type	Primary Antibody
Code	BT-AP04448
Host	Rabbit
Isotype	IgG
Size	20ul, 50ul, 100ul
Immunogen	Synthesized peptide derived from human RFX4
Mol wt	80850
Species reactivity	Human, Mouse
Clonality	Polyclonal
Recommended application	WB
Concentration	1 mg/ml
Full name	RFX4
Synonyms	RFX4

This product is for research use only, not for use in human, therapeutic or diagnostic procedure.

Background

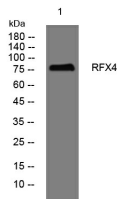
This gene is a member of the regulatory factor X gene family| which encodes transcription factors that contain a highly-conserved winged helix DNA binding domain. The protein encoded by this gene is structurally related to regulatory factors X1| X2| X3| and X5. It has been shown to interact with itself as well as with regulatory factors X2 and X3| but it does not interact with regulatory factor X1. Alternative splicing results in multiple transcript variants.

Recommended Dilution

WB: 1: 500 - 1: 2000

Not yet tested in other applications.

Images



Western blot analysis of lysates from MCF-7 cells, primary antibody was diluted at 1:1000, 4°C overnight

Storage

-20°C for 1 year