

## RFX5 Rabbit Polyclonal Antibody

### Description

<b>Product type</b>	Primary Antibody
<b>Code</b>	BT-AP04449
<b>Host</b>	Rabbit
<b>Isotype</b>	IgG
<b>Size</b>	20ul, 50ul, 100ul
<b>Immunogen</b>	Synthesized peptide derived from human RFX5
<b>Mol wt</b>	67760
<b>Species reactivity</b>	Human, Mouse
<b>Clonality</b>	Polyclonal
<b>Recommended application</b>	WB
<b>Concentration</b>	1 mg/ml
<b>Full name</b>	RFX5
<b>Synonyms</b>	RFX5

This product is for research use only, not for use in human, therapeutic or diagnostic procedure.

### Background

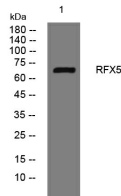
A lack of MHC-II expression results in a severe immunodeficiency syndrome called MHC-II deficiency or the bare lymphocyte syndrome (BLS; MIM 209920). At least 4 complementation groups have been identified in B-cell lines established from patients with BLS. The molecular defects in complementation groups B| C| and D all lead to a deficiency in RFX| a nuclear protein complex that binds to the X box of MHC-II promoters. The lack of RFX binding activity in complementation group C results from mutations in the RFX5 gene encoding the 75-kD subunit of RFX (Steimle et al. | 1995). RFX5 is the fifth member of the growing family of DNA-binding proteins sharing a novel and highly characteristic DNA-binding domain called the RFX motif. Multiple alternatively spliced transcript variants have been found but the full-length nature of only two have been determined.

### Recommended Dilution

WB: 1: 500 - 1: 2000

Not yet tested in other applications.

### Images



Western blot analysis of lysates from A431 cells, primary antibody was diluted at 1:1000, 4°C overnight

### Storage

-20°C for 1 year