

## IL-17RC Polyclonal Antibody

### Description

<b>Product type</b>	Primary Antibody
<b>Code</b>	BT-AP04453
<b>Host</b>	Rabbit
<b>Isotype</b>	IgG
<b>Size</b>	20ul, 50ul, 100ul
<b>Immunogen</b>	The antiserum was produced against synthesized peptide derived from human IL17RC. AA range:721-770
<b>Mol wt</b>	86294
<b>Species reactivity</b>	Human
<b>Clonality</b>	Polyclonal
<b>Recommended application</b>	WB, ELISA
<b>Concentration</b>	1 mg/ml
<b>Full name</b>	IL-17RC Antibody
<b>Synonyms</b>	IL17RC; Interleukin-17 receptor C; IL-17 receptor C; IL-17RC; Interleukin-17 receptor homolog; IL17Rhom; Interleukin-17 receptor-like protein; IL-17RL; ZeytoR14

**This product is for research use only, not for use in human, therapeutic or diagnostic procedure.**

### Background

IL17RC encodes a single-pass type I membrane protein that shares similarity with the interleukin-17 receptor (IL-17RA). Unlike IL-17RA, which is predominantly expressed in hemopoietic cells, and binds with high affinity to only IL-17A, Interleukin-17 receptor C is expressed in nonhemopoietic tissues, and binds both IL-17A and IL-17F with similar affinities. The proinflammatory cytokines, IL-17A and IL-17F, have been implicated in the progression of inflammatory and autoimmune diseases. Multiple alternatively spliced transcript variants encoding different isoforms have been detected for this gene, and it has been proposed that soluble, secreted proteins lacking transmembrane and intracellular domains may function as extracellular antagonists to cytokine signaling.

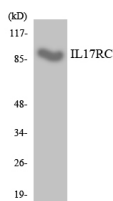
### Recommended Dilution

WB: 1: 500 - 1: 2000

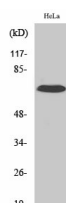
ELISA: 1: 20000

Not yet tested in other applications.

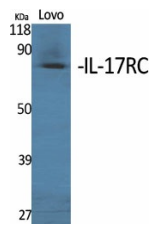
### Images



Western blot analysis of the lysates from RAW264.7 cells using IL17RC antibody.



Western Blot analysis of HuvEc cells using IL-17RC Polyclonal Antibody



Western Blot analysis of various cells using IL-17RC Polyclonal Antibody

### Storage

-20°C for one year

501 Changsheng S Rd, Nanhu Dist, Jiaxing, Zhejiang, China

Tel: 86 21 31007137 | E-mail: [save@bt-laboratory.com](mailto:save@bt-laboratory.com) | [www.bt-laboratory.com](http://www.bt-laboratory.com)