

IL-1F5 Polyclonal Antibody

Description

Product type	Primary Antibody
Code	BT-AP04461
Host	Rabbit
Isotype	IgG
Size	20ul, 50ul, 100ul
Immunogen	The antiserum was produced against synthesized peptide derived from the Internal region of human IL36RN. AA range:1-50
Mol wt	16962
Species reactivity	Human, Mouse, Rat
Clonality	Polyclonal
Recommended application	WB, ELISA
Concentration	1 mg/ml
Full name	IL-1F5 Antibody
Synonyms	IL36RN; FIL1D; IL1F5; IL1HY1; IL1L1; IL1RP3; Interleukin-36 receptor antagonist protein; FIL1 delta; IL-1-related protein 3; IL-1RP3; Interleukin-1 HY1; IL-1HY1; Interleukin-1 delta; IL-1 delta; Inter

This product is for research use only, not for use in human, therapeutic or diagnostic procedure.

Background

The protein encoded by IL36RN (interleukin 36 receptor antagonist) is a member of the interleukin 1 cytokine family. This cytokine was shown to specifically inhibit the activation of NF-kappaB induced by interleukin 1 family, member 6 (IL1F6). IL36RN and eight other interleukin 1 family genes form a cytokine gene cluster on chromosome 2. Two alternatively spliced transcript variants encoding the same protein have been reported.

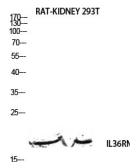
Recommended Dilution

WB: 1: 500 - 1: 2000

ELISA: 1: 10000

Not yet tested in other applications.

Images



Western blot analysis of RAT-KIDNEY 293T lysis using IL36RN antibody. Antibody was diluted at 1:500.
Secondary antibody was diluted at 1:20000

Storage

-20°C for one year