

## RhoA(Phospho Ser188) Rabbit Polyclonal Antibody

### Description

<b>Product type</b>	Primary Antibody
<b>Code</b>	BT-AP04463
<b>Host</b>	Rabbit
<b>Isotype</b>	IgG
<b>Size</b>	20ul, 50ul, 100ul
<b>Immunogen</b>	Synthesized peptide derived from human RhoA (Phospho Ser188)
<b>Mol wt</b>	21230
<b>Species reactivity</b>	Human, Mouse, Rat
<b>Clonality</b>	Polyclonal
<b>Recommended application</b>	WB, ELISA
<b>Concentration</b>	1 mg/ml
<b>Full name</b>	RhoA
<b>Synonyms</b>	RhoA ;Phospho Ser188; Transforming protein RhoA; Rho cDNA clone 12; h12

This product is for research use only, not for use in human, therapeutic or diagnostic procedure.

### Background

This gene encodes a member of the Rho family of small GTPases| which cycle between inactive GDP-bound and active GTP-bound states and function as molecular switches in signal transduction cascades. Rho proteins promote reorganization of the actin cytoskeleton and regulate cell shape| attachment| and motility. Overexpression of this gene is associated with tumor cell proliferation and metastasis. Multiple alternatively spliced variants have been identified.

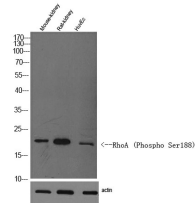
### Recommended Dilution

WB: 1: 1000 - 1: 2000

ELISA: 1: 5000 - 1: 20000

Not yet tested in other applications.

### Images



Western Blot analysis of mouse kidney, rat kidney. Primary Antibody was diluted at 1:1000. Secondary antibody was diluted at 1:10000

### Storage

-20°C for 1 year