

## IL-1Beta Polyclonal Antibody

### Description

<b>Product type</b>	Primary Antibody
<b>Code</b>	BT-AP04470
<b>Host</b>	Rabbit
<b>Isotype</b>	IgG
<b>Size</b>	20ul, 50ul, 100ul
<b>Immunogen</b>	The antiserum was produced against synthesized peptide derived from human IL-1beta. AA range:113-162
<b>Mol wt</b>	30607
<b>Species reactivity</b>	Human, Mouse, Rat
<b>Clonality</b>	Polyclonal
<b>Recommended application</b>	WB, IHC-p, ELISA
<b>Concentration</b>	1 mg/ml
<b>Full name</b>	IL-1beta Antibody
<b>Synonyms</b>	IL1B; IL1F2; Interleukin-1 beta; IL-1 beta; Catabolin

This product is for research use only, not for use in human, therapeutic or diagnostic procedure.

### Background

The protein encoded by IL1A is a member of the interleukin 1 cytokine family. This cytokine is a pleiotropic cytokine involved in various immune responses, inflammatory processes, and hematopoiesis. This cytokine is produced by monocytes and macrophages as a proprotein, which is proteolytically processed and released in response to cell injury, and thus induces apoptosis. This gene and eight other interleukin 1 family genes form a cytokine gene cluster on chromosome 2. It has been suggested that the polymorphism of these genes is associated with rheumatoid arthritis and Alzheimer's disease.

### Recommended Dilution

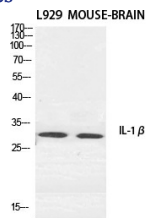
WB: 1: 500 - 1: 2000

IHC: 1: 100 - 1: 300

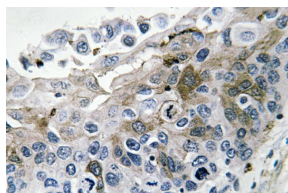
ELISA: 1: 5000

Not yet tested in other applications.

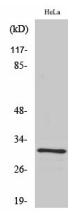
### Images



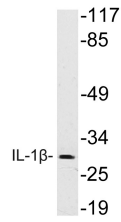
Western Blot analysis of various cells using IL-1 $\beta$  Polyclonal Antibody diluted at 1:1000



Immunohistochemistry analysis of IL-1 $\beta$  in paraffin-embedded human lung carcinoma tissue.



Western Blot analysis of HeLa cells using IL-1 $\beta$  Polyclonal Antibody diluted at 1:1000



Western blot analysis of lysate from HeLa cells, using IL-1 $\beta$  antibody.

### Storage

-20°C for one year

501 Changsheng S Rd, Nanhu Dist, Jiaxing, Zhejiang, China

Tel: 86 21 31007137 | E-mail: [save@bt-laboratory.com](mailto:save@bt-laboratory.com) | [www.bt-laboratory.com](http://www.bt-laboratory.com)