

IL-22 Polyclonal Antibody

Description

| | |
|--------------------------------|---|
| Product type | Primary Antibody |
| Code | BT-AP04478 |
| Host | Rabbit |
| Isotype | IgG |
| Size | 20ul, 50ul, 100ul |
| Immunogen | The antiserum was produced against synthesized peptide derived from the C-terminal region of human IL22. AA range:121-170 |
| Mol wt | 20011 |
| Species reactivity | Human, Mouse, Rat |
| Clonality | Polyclonal |
| Recommended application | WB, ELISA |
| Concentration | 1 mg/ml |
| Full name | IL-22 Antibody |
| Synonyms | IL22; ILTIF; ZCYTO18; Interleukin-22; IL-22; Cytokine Zcyto18; IL-10-related T-cell-derived-inducible factor; IL-TIF |

This product is for research use only, not for use in human, therapeutic or diagnostic procedure.

Background

IL-10-related T cell-derived inducible factor (IL-22, also known as IL-TIF) is a cytokine that was originally identified in mouse as an IL-9 inducible gene in T cells and mast cells and shows 22% amino acid identity with IL-10. Additionally, IL-22 is induced by IL-9 in thymic lymphomas and by lectins in freshly isolated splenocytes. IL-22 is found in both the thymus and brain, which suggests that the role of this factor is not restricted to the immune system. IL-22 is a ligand for CRF2-4, a member of the class II cytokine receptor family. In contrast to IL-10, IL-22 does not inhibit the production of proinflammatory cytokines by monocytes in response to lipopolysaccharide nor does it impact IL-10 function on monocytes, but it has modest inhibitory effects on IL-4 production from Th2 T cells.

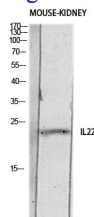
Recommended Dilution

WB: 1: 500 - 1: 2000

ELISA: 1: 10000

Not yet tested in other applications.

Images



Western blot analysis of MOUSE-KIDNEY lysis using IL22 antibody. Antibody was diluted at 1:500. Secondary antibody was diluted at 1:20000

Storage

-20°C for one year