

IL-28 Polyclonal Antibody

Description

Product type	Primary Antibody
Code	BT-AP04482
Host	Rabbit
Isotype	IgG
Size	20ul, 50ul, 100ul
Immunogen	The antiserum was produced against synthesized peptide derived from the C-terminal region of human IL28A. AA range:131-180
Mol wt	22288
Species reactivity	Human
Clonality	Polyclonal
Recommended application	WB, IHC-p, ELISA
Concentration	1 mg/ml
Full name	IL-28 Antibody
Synonyms	IL28A; IL 28; IFNL2; ZCYTO20; Interleukin-28A; IL-28A; Cytokine Zcyto20; Interferon lambda-2; IFN-lambda-2

This product is for research use only, not for use in human, therapeutic or diagnostic procedure.

Background

IFNL2 encodes a cytokine distantly related to type I interferons and the IL-10 family. This gene, interleukin 28B (IL28B), and interleukin 29 (IL29) are three closely related cytokine genes that form a cytokine gene cluster on a chromosomal region mapped to 19q13. Expression of the cytokines encoded by the three genes can be induced by viral infection. All three cytokines have been shown to interact with a heterodimeric class II cytokine receptor that consists of interleukin 10 receptor, beta (IL10RB) and interleukin 28 receptor, alpha (IL28RA).

Recommended Dilution

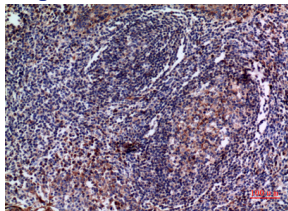
WB: 1: 500 - 1: 2000

IHC-p: 1: 100 - 1: 300

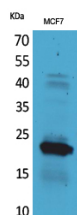
ELISA: 1: 20000

Not yet tested in other applications.

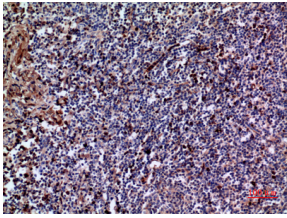
Images



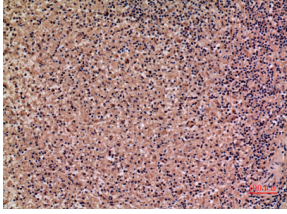
Immunohistochemical analysis of paraffin-embedded human-tonsil, antibody was diluted at 1:100



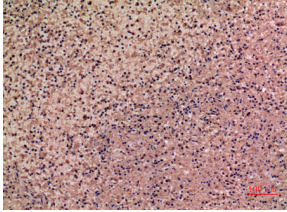
Western Blot analysis of MCF7 cells using IL-28 Polyclonal Antibody. Secondary antibody was diluted at 1:20000



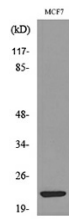
Immunohistochemical analysis of paraffin-embedded human-tonsil, antibody was diluted at 1:100



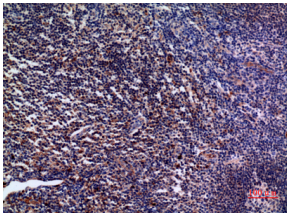
Immunohistochemical analysis of paraffin-embedded human-spleen, antibody was diluted at 1:100



Immunohistochemical analysis of paraffin-embedded human-spleen, antibody was diluted at 1:100



Western blot analysis of lysate from MCF7 cells, using IL28A Antibody.



Immunohistochemical analysis of paraffin-embedded human-tonsil, antibody was diluted at 1:100

Storage

-20°C for one year

501 Changsheng S Rd, Nanhu Dist, Jiaxing, Zhejiang, China

Tel: 86 21 31007137 | E-mail: save@bt-laboratory.com | www.bt-laboratory.com