

IL-29 Polyclonal Antibody

Description

Product type	Primary Antibody
Code	BT-AP04485
Host	Rabbit
Isotype	IgG
Size	20ul, 50ul, 100ul
Immunogen	The antiserum was produced against synthesized peptide derived from the Internal region of human IL29. AA range:121-170
Mol wt	21898
Species reactivity	Human
Clonality	Polyclonal
Recommended application	WB, ELISA
Concentration	1 mg/ml
Full name	IL-29 Antibody
Synonyms	IL29; IFNL1; ZCYTO21; Interleukin-29; IL-29; Cytokine Zcyto21; Interferon lambda-1; IFN-lambda-1

This product is for research use only, not for use in human, therapeutic or diagnostic procedure.

Background

IFNL1 encodes a cytokine distantly related to type I interferons and the IL-10 family. This gene, interleukin 28A (IL28A), and interleukin 28B (IL28B) are three closely related cytokine genes that form a cytokine gene cluster on a chromosomal region mapped to 19q13.

Expression of the cytokines encoded by the three genes can be induced by viral infection. All three cytokines have been shown to interact with a heterodimeric class II cytokine receptor that consists of interleukin 10 receptor, beta (IL10RB) and interleukin 28 receptor, alpha (IL28RA).

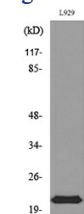
Recommended Dilution

WB: 1: 500 - 1: 2000

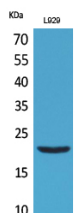
ELISA: 1: 20000

Not yet tested in other applications.

Images



Western blot analysis of lysate from L929 cells, using IL29 Antibody.



Western Blot analysis of L929 cells using IL-29 Polyclonal Antibody. Secondary antibody was diluted at 1:20000

Storage

-20°C for one year

501 Changsheng S Rd, Nanhu Dist, Jiaxing, Zhejiang, China

Tel: 86 21 31007137 | E-mail: save@bt-laboratory.com | www.bt-laboratory.com