

IL-32 Polyclonal Antibody

Description

Product type	Primary Antibody
Code	BT-AP04495
Host	Rabbit
Isotype	IgG
Size	20ul, 50ul, 100ul
Immunogen	The antiserum was produced against synthesized peptide derived from human IL-32. AA range:177-226
Mol wt	26676
Species reactivity	Human
Clonality	Polyclonal
Recommended application	WB, IHC-p, ELISA
Concentration	1 mg/ml
Full name	IL-32 Antibody
Synonyms	IL32; NK4; TAIF; Interleukin-32; IL-32; Natural killer cells protein 4; Tumor necrosis factor alpha-inducing factor

This product is for research use only, not for use in human, therapeutic or diagnostic procedure.

Background

IL32 encodes a member of the cytokine family. Interleukin-32 contains a tyrosine sulfation site, 3 potential N-myristoylation sites, multiple putative phosphorylation sites, and an RGD cell-attachment sequence. Expression of this protein is increased after the activation of T-cells by mitogens or the activation of NK cells by IL-2. Interleukin-32 induces the production of TNFalpha from macrophage cells. Alternate transcriptional splice variants, encoding different isoforms, have been characterized.

Recommended Dilution

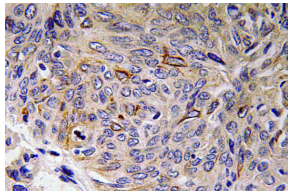
WB: 1: 500 - 1: 2000

IHC: 1: 100 - 1: 300

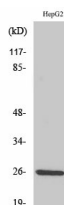
ELISA: 1: 40000

Not yet tested in other applications.

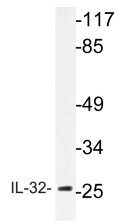
Images



Immunohistochemistry analysis of IL-32 antibody in paraffin-embedded human lung carcinoma tissue.



Western Blot analysis of various cells using IL-32 Polyclonal Antibody



Western blot analysis of lysate from HepG2 cells, using IL-32 antibody.

Storage

-20°C for one year

501 Changsheng S Rd, Nanhu Dist, Jiaxing, Zhejiang, China

Tel: 86 21 31007137 | E-mail: save@bt-laboratory.com | www.bt-laboratory.com