

IL-4 Polyclonal Antibody

Description

Product type	Primary Antibody
Code	BT-AP04502
Host	Rabbit
Isotype	IgG
Size	20ul, 50ul, 100ul
Immunogen	The antiserum was produced against synthesized peptide derived from the Internal region of human IL4. AA range:81-130
Mol wt	17492
Species reactivity	Human
Clonality	Polyclonal
Recommended application	WB, IHC-p, ELISA
Concentration	1 mg/ml
Full name	IL-4 Antibody
Synonyms	B cell growth factor 1; BCDF; B-cell stimulatory factor 1; BCGF1; BCGF-1; binetrakin; BSF1; BSF-1; IL4; IL-4; IL 4; IL-4B_cell stimulatory factor 1; IL4E12; interleukin 4; interleukin-4; Lymphocyte stimulatory factor 1; MGC79402; pitrakinra

This product is for research use only, not for use in human, therapeutic or diagnostic procedure.

Background

Interleukin-4 encoded by IL4 is a pleiotropic cytokine produced by activated T cells. This cytokine is a ligand for interleukin 4 receptor. The interleukin 4 receptor also binds to IL13, which may contribute to many overlapping functions of this cytokine and IL13. STAT6, a signal transducer and activator of transcription, has been shown to play a central role in mediating the immune regulatory signal of this cytokine. This gene, IL3, IL5, IL13, and CSF2 form a cytokine gene cluster on chromosome 5q, with this gene particularly close to IL13. This gene, IL13 and IL5 are found to be regulated coordinately by several long-range regulatory elements in an over 120 kilobase range on the chromosome. Two alternatively spliced transcript variants of this gene encoding distinct isoforms have been reported.

Recommended Dilution

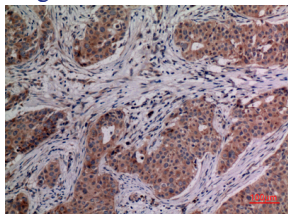
WB: 1: 500 - 1: 2000

IHC-p: 1: 100 - 300

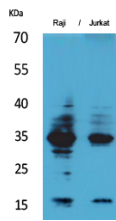
ELISA: 1: 20000

Not yet tested in other applications.

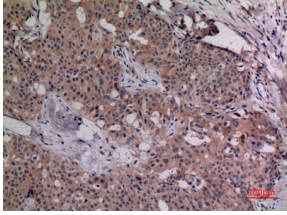
Images



Immunohistochemical analysis of paraffin-embedded human-breast-cancer, antibody was diluted at 1:100



Western Blot analysis of Raji, Jurkat cells using IL-4 Polyclonal Antibody. Secondary antibody was diluted at 1:20000



Immunohistochemical analysis of paraffin-embedded human-breast-cancer, antibody was diluted at 1:100

Storage

-20°C for one year

501 Changsheng S Rd, Nanhu Dist, Jiaxing, Zhejiang, China

Tel: 86 21 31007137 | E-mail: save@bt-laboratory.com | www.bt-laboratory.com