

IL-8 Polyclonal Antibody

Description

Product type	Primary Antibody
Code	BT-AP04514
Host	Rabbit
Isotype	IgG
Size	20ul, 50ul, 100ul
Immunogen	The antiserum was produced against synthesized peptide derived from the C-terminal region of human IL8. AA range:50-99
Mol wt	11098
Species reactivity	Human
Clonality	Polyclonal
Recommended application	IF, WB, IHC-p, ELISA
Concentration	1 mg/ml
Full name	IL-8 Antibody
Synonyms	IL8; IL 8; CXCL8; Interleukin-8; IL-8; C-X-C motif chemokine 8; Emotakin; Granulocyte chemotactic protein 1; GCP-1; Monocyte-derived neutrophil chemotactic factor; MDNCF; Monocyte-derived neutrophil-activat

This product is for research use only, not for use in human, therapeutic or diagnostic procedure.

Background

Interleukin-8 encoded by IL8 is a member of the CXC chemokine family. This chemokine is one of the major mediators of the inflammatory response. This chemokine is secreted by several cell types. It functions as a chemoattractant, and is also a potent angiogenic factor. This gene is believed to play a role in the pathogenesis of bronchiolitis, a common respiratory tract disease caused by viral infection. This gene and other ten members of the CXC chemokine gene family form a chemokine gene cluster in a region mapped to chromosome 4q.

Recommended Dilution

WB: 1: 500 - 1: 2000

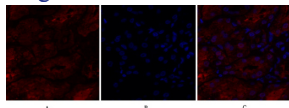
IHC-p: 1: 100 - 300

ELISA: 1: 20000

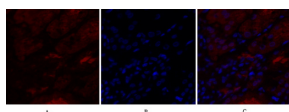
IF: 1: 50 - 200

Not yet tested in other applications.

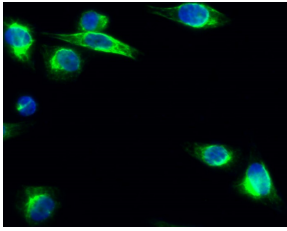
Images



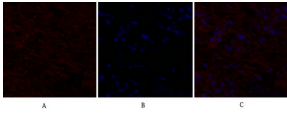
Immunofluorescence analysis of human-kidney tissue. 1,IL-8 Polyclonal Antibody(red) was diluted at 1:200(4°C,overnight). 2, Cy3 labeled Secondary antibody was diluted at 1:300(room temperature, 50min).3, Picture B: DAPI(blue) 10min. Picture A:Target. Picture B: DAPI. Picture C: merge of A+B



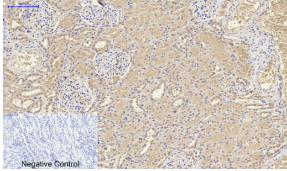
Immunofluorescence analysis of human-kidney tissue. 1,IL-8 Polyclonal Antibody(red) was diluted at 1:200(4°C,overnight). 2, Cy3 labeled Secondary antibody was diluted at 1:300(room temperature, 50min).3, Picture B: DAPI(blue) 10min. Picture A:Target. Picture B: DAPI. Picture C: merge of A+B



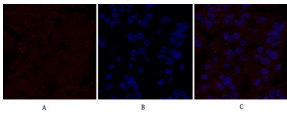
Immunofluorescence analysis of HeLa cell. 1,IL-8 Polyclonal Antibody(green) was diluted at 1:200(4° overnight). 2, Goat Anti Rabbit Alexa Fluor 488 was diluted at 1:1000(room temperature, 50min). 3 DAPI(blue) 10min.



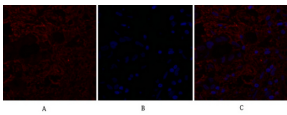
Immunofluorescence analysis of human-breast-cancer tissue. 1,IL-8 Polyclonal Antibody(red) was diluted at 1:200(4°C,overnight). 2, Cy3 labeled Secondary antibody was diluted at 1:300(room temperature, 50min).3, Picture B: DAPI(blue) 10min. Picture A:Target. Picture B: DAPI. Picture C: merge of A+B



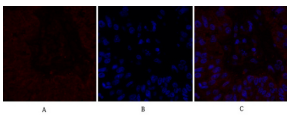
Immunohistochemical analysis of paraffin-embedded Human-kidney tissue. 1,IL-8 Polyclonal Antibody was diluted at 1:200(4°C,overnight). 2, Sodium citrate pH 6.0 was used for antibody retrieval(>98°C,20min). 3,Secondary antibody was diluted at 1:200(room temperature, 30min). Negative control was used by secondary antibody only.



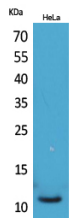
Immunofluorescence analysis of human-liver-cancer tissue. 1,IL-8 Polyclonal Antibody(red) was diluted at 1:200(4°C,overnight). 2, Cy3 labeled Secondary antibody was diluted at 1:300(room temperature, 50min).3, Picture B: DAPI(blue) 10min. Picture A:Target. Picture B: DAPI. Picture C: merge of A+B



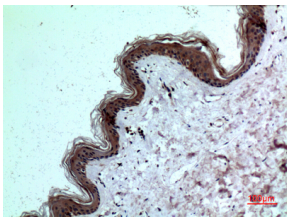
Immunofluorescence analysis of human-breast-cancer tissue. 1,IL-8 Polyclonal Antibody(red) was diluted at 1:200(4°C,overnight). 2, Cy3 labeled Secondary antibody was diluted at 1:300(room temperature, 50min).3, Picture B: DAPI(blue) 10min. Picture A:Target. Picture B: DAPI. Picture C: merge of A+B



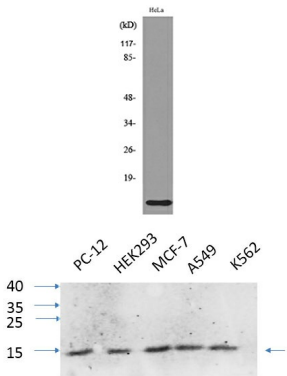
Immunofluorescence analysis of human-liver-cancer tissue. 1,IL-8 Polyclonal Antibody(red) was diluted at 1:200(4°C,overnight). 2, Cy3 labeled Secondary antibody was diluted at 1:300(room temperature, 50min).3, Picture B: DAPI(blue) 10min. Picture A:Target. Picture B: DAPI. Picture C: merge of A+B



Western Blot analysis of HeLa cells using IL-8 Polyclonal Antibody. Secondary antibody was diluted at 1:20000

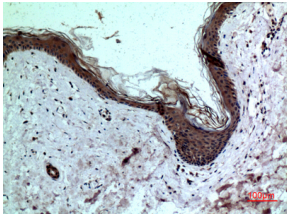


Immunohistochemical analysis of paraffin-embedded human-skin, antibody was diluted at 1:100

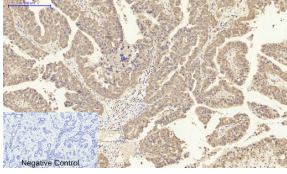


Western blot analysis of lysate from HeLa cells, using IL8 Antibody.

Western Blot analysis of various cells using primary antibody diluted at 1:1000(4°C overnight). Secondary antibody:Goat Anti-rabbit IgG IRDye 800(diluted at 1:5000, 25°C, 1 hour).



Immunohistochemical analysis of paraffin-embedded human-skin, antibody was diluted at 1:100



Immunohistochemical analysis of paraffin-embedded Human-liver-cancer tissue. 1,IL-8 Polyclonal Antibody was diluted at 1:200(4°C,overnight). 2, Sodium citrate pH 6.0 was used for antibody retrieval(>98°C,20min). 3,Secondary antibody was diluted at 1:200(room tempeRature, 30min). Negative control was used by secondary antibody only.

Storage

-20°C for one year

501 Changsheng S Rd, Nanhu Dist, Jiaxing, Zhejiang, China

Tel: 86 21 31007137 | E-mail: save@bt-laboratory.com | www.bt-laboratory.com