

ROP1A Rabbit Polyclonal Antibody

Description

Product type	Primary Antibody
Code	BT-AP04528
Host	Rabbit
Isotype	IgG
Size	20ul, 50ul, 100ul
Immunogen	Synthesized peptide derived from human ROP1A
Mol wt	23320
Species reactivity	Human, Rat, Mouse
Clonality	Polyclonal
Recommended application	WB
Concentration	1 mg/ml
Full name	ROP1A
Synonyms	ROP1A

This product is for research use only, not for use in human, therapeutic or diagnostic procedure.

Background

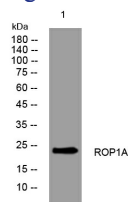
The protein encoded by this gene is found in the fibrous sheath of spermatazoa| where it interacts with raphilin| a Rho GTPase binding protein. The encoded protein also can bind an A-kinase anchoring protein (AKAP110) and a calcium-binding tyrosine phosphorylation-regulated protein (CABYR). This protein may be involved in sperm motility and has been shown to be a cancer-testis antigen in hematologic malignancies. Several transcript variants| some protein-coding and some non-protein coding| have been found for this gene.

Recommended Dilution

WB: 1: 500 - 1: 2000

Not yet tested in other applications.

Images



Western blot analysis of lysates from HeLa cells, primary antibody was diluted at 1:1000, 4°C overnight

Storage

-20°C for 1 year