

## Imp3 Polyclonal Antibody

### Description

<b>Product type</b>	Primary Antibody
<b>Code</b>	BT-AP04531
<b>Host</b>	Rabbit
<b>Isotype</b>	IgG
<b>Size</b>	20ul, 50ul, 100ul
<b>Immunogen</b>	Synthetic peptide from human protein at AA range: 135-184
<b>Mol wt</b>	21850
<b>Species reactivity</b>	Human, Mouse, Rat
<b>Clonality</b>	Polyclonal
<b>Recommended application</b>	WB, ELISA
<b>Concentration</b>	1 mg/ml
<b>Full name</b>	Imp3 Antibody
<b>Synonyms</b>	IMP3 C15orf12 MRPS4

This product is for research use only, not for use in human, therapeutic or diagnostic procedure.

### Background

IMP3 (IMP3, U3 small nucleolar ribonucleoprotein) encodes the human homolog of the yeast Imp3 protein. The protein localizes to the nucleoli and interacts with the U3 snoRNP complex. The protein contains an S4 domain.

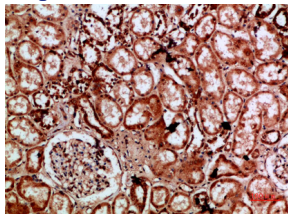
### Recommended Dilution

WB: 1: 500 - 2000

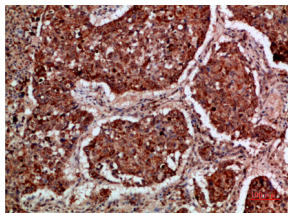
ELISA: 1: 10000 - 20000

Not yet tested in other applications.

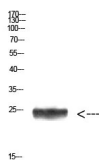
### Images



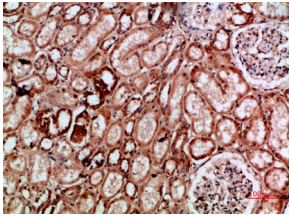
Immunohistochemical analysis of paraffin-embedded human-kidney, antibody was diluted at 1:200



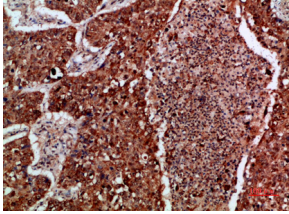
Immunohistochemical analysis of paraffin-embedded human-lung-cancer, antibody was diluted at 1:200



Western Blot analysis of HEPG2 cells using Antibody diluted at 1000. Secondary antibody was diluted at 1:20000



Immunohistochemical analysis of paraffin-embedded human-kidney, antibody was diluted at 1:200



Immunohistochemical analysis of paraffin-embedded human-lung-cancer, antibody was diluted at 1:200

### Storage

-20°C for one year

501 Changsheng S Rd, Nanhu Dist, Jiaxing, Zhejiang, China

Tel: 86 21 31007137 | E-mail: [save@bt-laboratory.com](mailto:save@bt-laboratory.com) | [www.bt-laboratory.com](http://www.bt-laboratory.com)