

## RPA32/RPA2(Phospho-Ser8) Rabbit Polyclonal Antibody

### Description

Product type	Primary Antibody
Code	BT-AP04533
Host	Rabbit
Isotype	IgG
Size	20ul, 50ul, 100ul
Immunogen	Synthesized phospho peptide around human RPA32 and RPA2 (Ser8)
Mol wt	N/A
Species reactivity	Human, Rat, Mouse
Clonality	Polyclonal
Recommended application	WB
Concentration	1 mg/ml
Full name	RPA32/RPA2
Synonyms	RPA32/RPA2 ;Ser8; Replication protein A 32 kDa subunit; RP-A p32; Replication factor A protein 2; RFA protein 2; Replication protein A 34 kDa subunit; RP-A p34

This product is for research use only, not for use in human, therapeutic or diagnostic procedure.

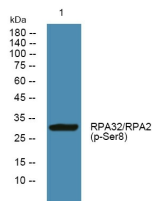
### Background

#### Recommended Dilution

WB: 1: 1000 - 1: 2000

Not yet tested in other applications.

### Images



Western blot analysis of lysates from Jarkat cells, primary antibody was diluted at 1:1000, 4°C overnight

### Storage

-20°C for 1 year

501 Changsheng S Rd, Nanhu Dist, Jiaxing, Zhejiang, China

Tel: 86 21 31007137 | E-mail: [save@bt-laboratory.com](mailto:save@bt-laboratory.com) | [www.bt-laboratory.com](http://www.bt-laboratory.com)