

INDOL1 Polyclonal Antibody

Description

Product type	Primary Antibody
Code	BT-AP04534
Host	Rabbit
Isotype	IgG
Size	20ul, 50ul, 100ul
Immunogen	The antiserum was produced against synthesized peptide derived from the Internal region of human IDO2. AA range:101-150
Mol wt	45424
Species reactivity	Human
Clonality	Polyclonal
Recommended application	WB, ELISA
Concentration	1 mg/ml
Full name	INDOL1 Antibody
Synonyms	IDO2; INDOL1; Indoleamine 2,3-dioxygenase 2; IDO-2; Indoleamine 2,3-dioxygenase-like protein 1; Indoleamine-pyrrole 2,3-dioxygenase-like protein 1

This product is for research use only, not for use in human, therapeutic or diagnostic procedure.

Background

Along with the enzymes encoded by the INDO (MIM 147435) and TDO2 (MIM 191070) genes, the enzyme encoded by the INDOL1 gene metabolizes tryptophan in the kynurenine pathway (Ball et al. 2007 [PubMed: 17499941]).

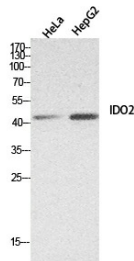
Recommended Dilution

WB: 1: 500 - 1: 2000

ELISA: 1: 20000

Not yet tested in other applications.

Images



Western Blot analysis of HeLa, HepG2 cells using INDOL1 Polyclonal Antibody. Secondary antibody was diluted at 1:20000

Storage

-20°C for one year