

Inhibin Beta-B Polyclonal Antibody

Description

Product type	Primary Antibody
Code	BT-AP04543
Host	Rabbit
Isotype	IgG
Size	20ul, 50ul, 100ul
Immunogen	The antiserum was produced against synthesized peptide derived from human Inhibin beta-B. AA range:75-124
Mol wt	45122
Species reactivity	Human, Mouse, Rat
Clonality	Polyclonal
Recommended application	WB, ELISA
Concentration	1 mg/ml
Full name	Inhibin beta-B Antibody
Synonyms	INHBB; Inhibin beta B chain; Activin beta-B chain

This product is for research use only, not for use in human, therapeutic or diagnostic procedure.

Background

INHBB encodes a member of the TGF-beta (transforming growth factor-beta) superfamily of proteins. The encoded preproprotein is proteolytically processed to generate a subunit of the dimeric activin and inhibin protein complexes. These complexes activate and inhibit, respectively, follicle stimulating hormone secretion from the pituitary gland. Polymorphisms near this gene are associated with pre-eclampsia in female human patients.

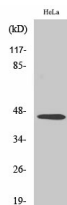
Recommended Dilution

WB: 1: 500 - 1: 2000

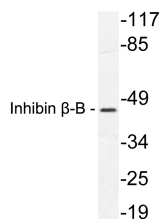
ELISA: 1: 10000

Not yet tested in other applications.

Images



Western Blot analysis of various cells using Inhibin β -B Polyclonal Antibody diluted at 1:1000



Western blot analysis of lysate from HeLa cells, using Inhibin β -B antibody.

Storage

-20°C for one year

501 Changsheng S Rd, Nanhu Dist, Jiaxing, Zhejiang, China

Tel: 86 21 31007137 | E-mail: save@bt-laboratory.com | www.bt-laboratory.com