

Inhibin Beta-C Polyclonal Antibody

Description

Product type	Primary Antibody
Code	BT-AP04545
Host	Rabbit
Isotype	IgG
Size	20ul, 50ul, 100ul
Immunogen	The antiserum was produced against synthesized peptide derived from the C-terminal region of human INHBC. AA range:301-350
Mol wt	38238
Species reactivity	Human, Mouse, Rat
Clonality	Polyclonal
Recommended application	WB, ELISA
Concentration	1 mg/ml
Full name	Inhibin beta-C Antibody
Synonyms	INHBC; Inhibin beta C chain; Activin beta-C chain

This product is for research use only, not for use in human, therapeutic or diagnostic procedure.

Background

INHBC encodes a member of the TGF-beta (transforming growth factor-beta) superfamily of proteins. Inhibin beta C chain is proteolytically processed to generate a subunit of homodimeric and heterodimeric activin complexes. The heterodimeric complex may function in the inhibition of activin A signaling. Transgenic mice overexpressing this gene exhibit defects in testis, liver and prostate.

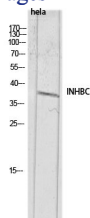
Recommended Dilution

WB: 1: 500 - 1: 2000

ELISA: 1: 10000

Not yet tested in other applications.

Images



Western blot analysis of HeLa lysis using INHBC antibody. Secondary antibody was diluted at 1:20000

Storage

-20°C for one year