

## Inhibin Beta-C Polyclonal Antibody

### Description

<b>Product type</b>	Primary Antibody
<b>Code</b>	BT-AP04546
<b>Host</b>	Rabbit
<b>Isotype</b>	IgG
<b>Size</b>	20ul, 50ul, 100ul
<b>Immunogen</b>	The antiserum was produced against synthesized peptide derived from human Inhibin beta-C. AA range:80-129
<b>Mol wt</b>	38238
<b>Species reactivity</b>	Human
<b>Clonality</b>	Polyclonal
<b>Recommended application</b>	WB, IHC-p, ELISA
<b>Concentration</b>	1 mg/ml
<b>Full name</b>	Inhibin beta-C Antibody
<b>Synonyms</b>	INHBC; Inhibin beta C chain; Activin beta-C chain

**This product is for research use only, not for use in human, therapeutic or diagnostic procedure.**

### Background

INHBC encodes a member of the TGF-beta (transforming growth factor-beta) superfamily of proteins. Inhibin beta C chain is proteolytically processed to generate a subunit of homodimeric and heterodimeric activin complexes. The heterodimeric complex may function in the inhibition of activin A signaling. Transgenic mice overexpressing this gene exhibit defects in testis, liver and prostate.

### Recommended Dilution

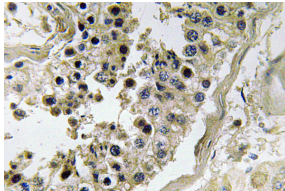
WB: 1: 500 - 1: 2000

IHC: 1: 100 - 1: 300

ELISA: 1: 5000

Not yet tested in other applications.

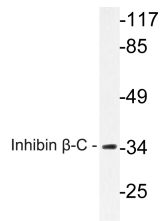
### Images



Immunohistochemistry analysis of Inhibin  $\beta$ -C antibody in paraffin-embedded human testis tissue.



Western Blot analysis of various cells using Inhibin  $\beta$ -C Polyclonal Antibody



Western blot analysis of lysate from A549 cells, using Inhibin  $\beta$ -C antibody.

### Storage

-20°C for one year

501 Changsheng S Rd, Nanhu Dist, Jiaxing, Zhejiang, China

Tel: 86 21 31007137 | E-mail: [save@bt-laboratory.com](mailto:save@bt-laboratory.com) | [www.bt-laboratory.com](http://www.bt-laboratory.com)