

Inhibin Beta-E Polyclonal Antibody

Description

Product type	Primary Antibody
Code	BT-AP04547
Host	Rabbit
Isotype	IgG
Size	20ul, 50ul, 100ul
Immunogen	The antiserum was produced against synthesized peptide derived from the C-terminal region of human INHBE. AA range:301-350
Mol wt	38561
Species reactivity	Human, Mouse, Rat
Clonality	Polyclonal
Recommended application	WB, IHC-p, ELISA
Concentration	1 mg/ml
Full name	Inhibin beta-E Antibody
Synonyms	INHBE; Inhibin beta E chain; Activin beta-E chain

This product is for research use only, not for use in human, therapeutic or diagnostic procedure.

Background

INHBE is a member of the activin beta family (see INHBA; MIM 147290) that plays a role in pancreatic exocrine cell growth and proliferation (Hashimoto et al. 2006 [PubMed: 16426570]).

Recommended Dilution

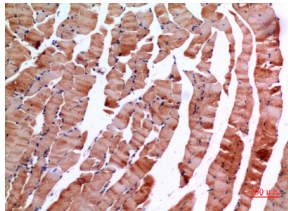
WB: 1: 500 - 1: 2000

IHC-p: 1: 100 - 1: 300

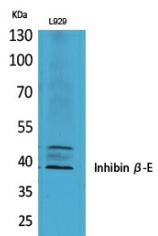
ELISA: 1: 20000

Not yet tested in other applications.

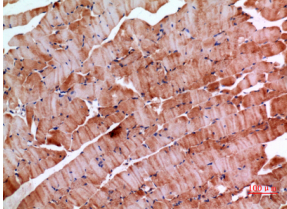
Images



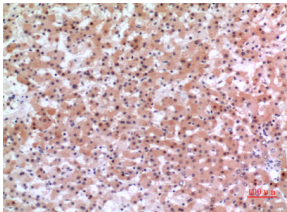
Immunohistochemical analysis of paraffin-embedded mouse-muscle, antibody was diluted at 1:100



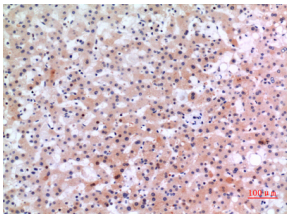
Western Blot analysis of L929 cells using Inhibin β -E Polyclonal Antibody. Antibody was diluted at 1:500. Secondary antibody was diluted at 1:20000



Immunohistochemical analysis of paraffin-embedded mouse-muscle, antibody was diluted at 1:100



Immunohistochemical analysis of paraffin-embedded human-liver, antibody was diluted at 1:100



Immunohistochemical analysis of paraffin-embedded human-liver, antibody was diluted at 1:100

Storage

-20°C for one year

501 Changsheng S Rd, Nanhu Dist, Jiaxing, Zhejiang, China

Tel: 86 21 31007137 | E-mail: save@bt-laboratory.com | www.bt-laboratory.com