

RSH4A Rabbit Polyclonal Antibody

Description

Product type	Primary Antibody
Code	BT-AP04552
Host	Rabbit
Isotype	IgG
Size	20ul, 50ul, 100ul
Immunogen	Synthesized peptide derived from human RSH4A
Mol wt	78760
Species reactivity	Human, Mouse
Clonality	Polyclonal
Recommended application	WB
Concentration	1 mg/ml
Full name	RSH4A
Synonyms	RSH4A

This product is for research use only, not for use in human, therapeutic or diagnostic procedure.

Background

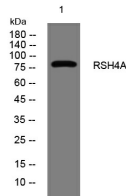
This gene encodes a protein that appears to be a component the radial spoke head| as determined by homology to similar proteins in the biflagellate alga *Chlamydomonas reinhardtii* and other ciliates. Radial spokes| which are regularly spaced along cilia| sperm| and flagella axonemes| consist of a thin 'stalk' and a bulbous 'head' that form a signal transduction scaffold between the central pair of microtubules and dynein. Mutations in this gene cause primary ciliary dyskinesia 1| a disease arising from dysmotility of motile cilia and sperm. Alternative splicing results in multiple transcript variants.

Recommended Dilution

WB: 1: 500 - 1: 2000

Not yet tested in other applications.

Images



Western blot analysis of lysates from A431 cells, primary antibody was diluted at 1:1000, 4°C overnight

Storage

-20°C for 1 year