

InsP5 2-kinase Polyclonal Antibody

Description

Product type	Primary Antibody
Code	BT-AP04558
Host	Rabbit
Isotype	IgG
Size	20ul, 50ul, 100ul
Immunogen	The antiserum was produced against synthesized peptide derived from human IPPK. AA range:11-60
Mol wt	56017
Species reactivity	Human, Mouse, Rat
Clonality	Polyclonal
Recommended application	WB, IHC-p, IF, ELISA
Concentration	1 mg/ml
Full name	InsP5 2-kinase Antibody
Synonyms	IPPK; C9orf12; Inositol-pentakisphosphate 2-kinase; IPK1 homolog; Inositol-1; 3,4,5,6-pentakisphosphate 2-kinase; Ins(1,3,4,5,6)P5 2-kinase; InsP5 2-kinase

This product is for research use only, not for use in human, therapeutic or diagnostic procedure.

Background

The protein encoded by IPPK (inositol-pentakisphosphate 2-kinase) is a kinase that phosphorylates position 2 of inositol-1,3,4,5,6-pentakisphosphate to form inositol-1,2,3,4,5,6-hexakisphosphate (InsP6). InsP6 has a variety of functions, including stimulation of DNA repair, endocytosis, and mRNA export.

Recommended Dilution

WB: 1: 500 - 1: 2000

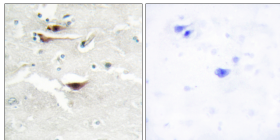
IHC: 1: 100 - 1: 300

IF: 1: 200 - 1: 1000

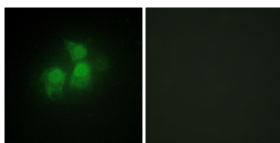
ELISA: 1: 10000

Not yet tested in other applications.

Images



Immunohistochemistry analysis of paraffin-embedded human brain tissue, using IPPK Antibody. The picture on the right is blocked with the synthesized peptide.



Immunofluorescence analysis of HepG2 cells, using IPPK Antibody. The picture on the right is blocked with the synthesized peptide.

Storage

-20°C for one year