

Insulin R Polyclonal Antibody

Description

Product type	Primary Antibody
Code	BT-AP04567
Host	Rabbit
Isotype	IgG
Size	20ul, 50ul, 100ul
Immunogen	The antiserum was produced against synthesized peptide derived from human IR. AA range:1321-1370
Mol wt	156307
Species reactivity	Human, Mouse, Rat, Monkey
Clonality	Polyclonal
Recommended application	WB, IHC-p, ELISA
Concentration	1 mg/ml
Full name	Insulin R Antibody
Synonyms	INSR; Insulin receptor; IR; CD antigen CD220

This product is for research use only, not for use in human, therapeutic or diagnostic procedure.

Background

INSR encodes a member of the receptor tyrosine kinase family of proteins. The encoded preproprotein is proteolytically processed to generate alpha and beta subunits that form a heterotetrameric receptor. Binding of insulin or other ligands to this receptor activates the insulin signaling pathway, which regulates glucose uptake and release, as well as the synthesis and storage of carbohydrates, lipids and protein. Mutations in this gene underlie the inherited severe insulin resistance syndromes including type A insulin resistance syndrome, Donohue syndrome and Rabson-Mendenhall syndrome. Alternative splicing results in multiple transcript variants.

Recommended Dilution

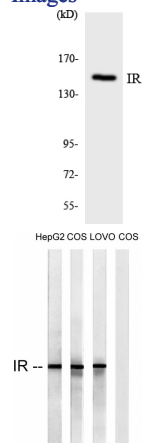
WB: 1: 500 - 1: 2000

ELISA: 1: 5000

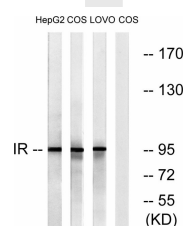
IHC-p: 100 - 300

Not yet tested in other applications.

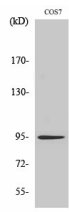
Images



Western blot analysis of the lysates from K562 cells using IR antibody.



Western blot analysis of lysates from COS, HEPG2, and LOVO cells, using IR Antibody. The lane on the right is blocked with the synthesized peptide.



Western Blot analysis of various cells using Insulin R Polyclonal Antibody diluted at 1:500

Storage

-20°C for one year

501 Changsheng S Rd, Nanhu Dist, Jiaxing, Zhejiang, China

Tel: 86 21 31007137 | E-mail: save@bt-laboratory.com | www.bt-laboratory.com