

RUVB2 Rabbit Polyclonal Antibody

Description

Product type	Primary Antibody
Code	BT-AP04569
Host	Rabbit
Isotype	IgG
Size	20ul, 50ul, 100ul
Immunogen	Synthesized peptide derived from human RUVB2
Mol wt	50930
Species reactivity	Human, Mouse
Clonality	Polyclonal
Recommended application	WB
Concentration	1 mg/ml
Full name	RUVB2
Synonyms	RUVB2

This product is for research use only, not for use in human, therapeutic or diagnostic procedure.

Background

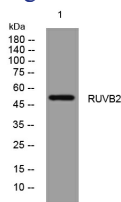
This gene encodes the second human homologue of the bacterial RuvB gene. Bacterial RuvB protein is a DNA helicase essential for homologous recombination and DNA double-strand break repair. Functional analysis showed that this gene product has both ATPase and DNA helicase activities. This gene is physically linked to the CGB/LHB gene cluster on chromosome 19q13.3| and is very close (55 nt) to the LHB gene| in the opposite orientation.

Recommended Dilution

WB: 1: 500 - 1: 2000

Not yet tested in other applications.

Images



Western blot analysis of lysates from THP-1 cells, primary antibody was diluted at 1:1000, 4°C overnight

Storage

-20°C for 1 year