

Integrin Alpha2 Polyclonal Antibody

Description

Product type	Primary Antibody
Code	BT-AP04570
Host	Rabbit
Isotype	IgG
Size	20ul, 50ul, 100ul
Immunogen	The antiserum was produced against synthesized peptide derived from the C-terminal region of human ITGA2. AA range:1081-1130
Mol wt	129295
Species reactivity	Human, Mouse, Rat
Clonality	Polyclonal
Recommended application	WB, IHC-p, ELISA
Concentration	1 mg/ml
Full name	Integrin alpha2 Antibody
Synonyms	ITGA2; CD49B; Integrin alpha-2; CD49 antigen-like family member B; Collagen receptor; Platelet membrane glycoprotein Ia; GPIa; VLA-2 subunit alpha; CD49b

This product is for research use only, not for use in human, therapeutic or diagnostic procedure.

Background

ITGA2 encodes the alpha subunit of a transmembrane receptor for collagens and related proteins. The integrin subunit alpha 2 forms a heterodimer with a beta subunit and mediates the adhesion of platelets and other cell types to the extracellular matrix. Loss of the encoded protein is associated with bleeding disorder platelet-type 9. Antibodies against this protein are found in several immune disorders, including neonatal alloimmune thrombocytopenia. This gene is located adjacent to a related alpha subunit gene. Alternative splicing results in multiple transcript variants.

Recommended Dilution

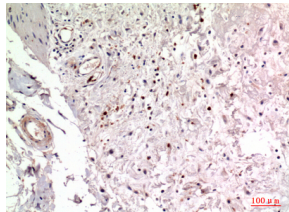
WB: 1: 500 - 1: 2000

IHC-p: 1: 100 - 1: 300

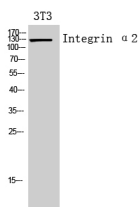
ELISA: 1: 10000

Not yet tested in other applications.

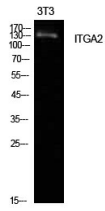
Images



Immunohistochemical analysis of paraffin-embedded human-colon, antibody was diluted at 1:100



Western Blot analysis of 3T3 cells using Integrin α2 Polyclonal Antibody. Secondary antibody was diluted at 1:20000



Western Blot analysis of NIH-3T3 cells using Integrin $\alpha 2$ Polyclonal Antibody. Secondary antibody was diluted at 1:20000

Storage

-20°C for one year

501 Changsheng S Rd, Nanhu Dist, Jiaxing, Zhejiang, China

Tel: 86 21 31007137 | E-mail: save@bt-laboratory.com | www.bt-laboratory.com