

## Integrin Alpha3 Polyclonal Antibody

### Description

<b>Product type</b>	Primary Antibody
<b>Code</b>	BT-AP04572
<b>Host</b>	Rabbit
<b>Isotype</b>	IgG
<b>Size</b>	20ul, 50ul, 100ul
<b>Immunogen</b>	The antiserum was produced against synthesized peptide derived from human Integrin alpha3. AA range:482-531
<b>Mol wt</b>	129295
<b>Species reactivity</b>	Human, Mouse, Rat
<b>Clonality</b>	Polyclonal
<b>Recommended application</b>	WB, ELISA
<b>Concentration</b>	1 mg/ml
<b>Full name</b>	Integrin alpha3 Antibody
<b>Synonyms</b>	ITGA3; MSK18; Integrin alpha-3; CD49 antigen-like family member C; FRP-2; Galactoprotein B3; GAPB3; VLA-3 subunit alpha; CD antigen CD49c

This product is for research use only, not for use in human, therapeutic or diagnostic procedure.

### Background

ITGA2 encodes the alpha subunit of a transmembrane receptor for collagens and related proteins. The integrin subunit alpha 2 forms a heterodimer with a beta subunit and mediates the adhesion of platelets and other cell types to the extracellular matrix. Loss of the encoded protein is associated with bleeding disorder platelet-type 9. Antibodies against this protein are found in several immune disorders, including neonatal alloimmune thrombocytopenia. This gene is located adjacent to a related alpha subunit gene. Alternative splicing results in multiple transcript variants.

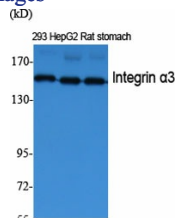
### Recommended Dilution

WB: 1: 500 - 1: 2000

ELISA: 1: 40000

Not yet tested in other applications.

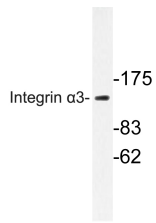
### Images



Western Blot analysis of various cells using Integrin  $\alpha$ 3 Polyclonal Antibody diluted at 1:2000



Western Blot analysis of HepG2 cells using Integrin  $\alpha$ 3 Polyclonal Antibody diluted at 1:2000



Western blot analysis of lysate from HepG2 cells, using Integrin  $\alpha$ 3 antibody.

### Storage

-20°C for one year

501 Changsheng S Rd, Nanhu Dist, Jiaxing, Zhejiang, China

Tel: 86 21 31007137 | E-mail: [save@bt-laboratory.com](mailto:save@bt-laboratory.com) | [www.bt-laboratory.com](http://www.bt-laboratory.com)