

Integrin Beta3 Polyclonal Antibody

Description

Product type	Primary Antibody
Code	BT-AP04587
Host	Rabbit
Isotype	IgG
Size	20ul, 50ul, 100ul
Immunogen	The antiserum was produced against synthesized peptide derived from the C-terminal region of human ITGB3. AA range:621-670
Mol wt	87214
Species reactivity	Human
Clonality	Polyclonal
Recommended application	WB, IHC-p, ELISA
Concentration	1 mg/ml
Full name	Integrin beta3 Antibody
Synonyms	ITGB3; GP3A; Integrin beta-3; Platelet membrane glycoprotein IIIa; GPIIIa; CD61

This product is for research use only, not for use in human, therapeutic or diagnostic procedure.

Background

Integrin beta-3 encoded by ITGB3 is the integrin beta chain beta 3. Integrins are integral cell-surface proteins composed of an alpha chain and a beta chain. A given chain may combine with multiple partners resulting in different integrins. Integrin beta 3 is found along with the alpha IIb chain in platelets. Integrins are known to participate in cell adhesion as well as cell-surface mediated signalling.

Recommended Dilution

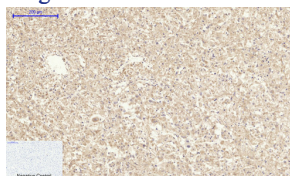
WB: 1: 500 - 2000

ELISA: 1: 10000 - 20000

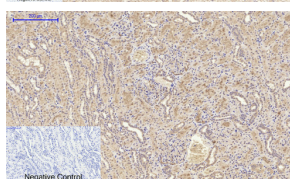
IHC: 1: 50 - 300

Not yet tested in other applications.

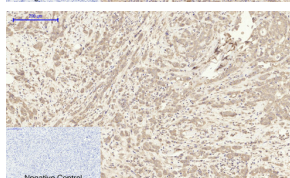
Images



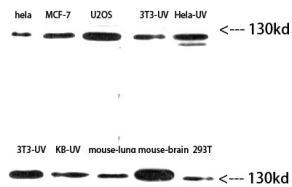
Immunohistochemical analysis of paraffin-embedded Human-kidney-cancer tissue. 1,Integrin β 3 Polyclonal Antibody was diluted at 1:200(4°C,overnight). 2, Sodium citrate pH 6.0 was used for antibody retrieval(>98°C,20min). 3,Secondary antibody was diluted at 1:200(room temperature, 30min). Negative control was used by secondary antibody only.



Immunohistochemical analysis of paraffin-embedded Human-kidney tissue. 1,Integrin β 3 Polyclonal Antibody was diluted at 1:200(4°C,overnight). 2, Sodium citrate pH 6.0 was used for antibody retrieval(>98°C,20min). 3,Secondary antibody was diluted at 1:200(room temperature, 30min). Negative control was used by secondary antibody only.

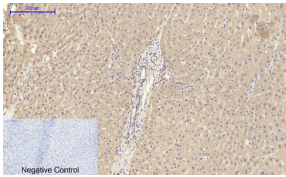


Immunohistochemical analysis of paraffin-embedded Human-breast-cancer tissue. 1,Integrin β 3 Polyclonal Antibody was diluted at 1:200(4°C,overnight). 2, Sodium citrate pH 6.0 was used for antibody retrieval(>98°C,20min). 3,Secondary antibody was diluted at 1:200(room temperature, 30min). Negative control was used by secondary antibody only.

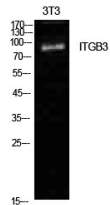


Western Blot analysis of 3T3-UV KB-UV mouse-lung mouse-brain 293T using Integrin β 3 Polyclonal Antibody diluted at 1:2000. Secondary antibody was diluted at 1:20000

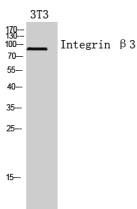
Western Blot analysis of heLa MCF-7 U2OS 3T3-UV HeLa-UV using Integrin β 3 Polyclonal Antibody diluted at 1:2000. Secondary antibody was diluted at 1:20000



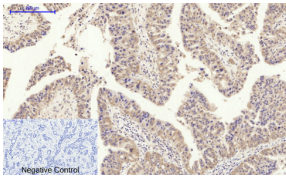
Immunohistochemical analysis of paraffin-embedded Human-liver tissue. 1, Integrin β 3 Polyclonal Antibody was diluted at 1:200(4°C, overnight). 2, Sodium citrate pH 6.0 was used for antibody retrieval(>98°C, 20min). 3, Secondary antibody was diluted at 1:200(room temperature, 30min). Negative control was used by secondary antibody only.



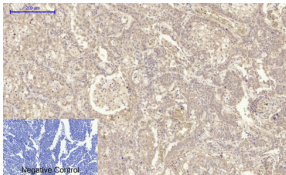
Western Blot analysis of NIH-3T3 cells using Integrin β 3 Polyclonal Antibody. Antibody was diluted at 1:2000. Secondary antibody was diluted at 1:20000



Western Blot analysis of 3T3 cells using Integrin β 3 Polyclonal Antibody diluted at 1:2000. Secondary antibody was diluted at 1:20000



Immunohistochemical analysis of paraffin-embedded Human-liver-cancer tissue. 1, Integrin β 3 Polyclonal Antibody was diluted at 1:200(4°C, overnight). 2, Sodium citrate pH 6.0 was used for antibody retrieval(>98°C, 20min). 3, Secondary antibody was diluted at 1:200(room temperature, 30min). Negative control was used by secondary antibody only.



Immunohistochemical analysis of paraffin-embedded Human-lung-cancer tissue. 1, Integrin β 3 Polyclonal Antibody was diluted at 1:200(4°C, overnight). 2, Sodium citrate pH 6.0 was used for antibody retrieval(>98°C, 20min). 3, Secondary antibody was diluted at 1:200(room temperature, 30min). Negative control was used by secondary antibody only.

Storage

-20°C for one year

501 Changsheng S Rd, Nanhu Dist, Jiaxing, Zhejiang, China

Tel: 86 21 31007137 | E-mail: save@bt-laboratory.com | www.bt-laboratory.com