

Integrin Beta3 Polyclonal Antibody

Description

Product type	Primary Antibody
Code	BT-AP04589
Host	Rabbit
Isotype	IgG
Size	20ul, 50ul, 100ul
Immunogen	The antiserum was produced against synthesized peptide derived from human Integrin beta3. AA range:739-788
Mol wt	87214
Species reactivity	Human, Mouse, Rat
Clonality	Polyclonal
Recommended application	WB, IHC-p, ELISA
Concentration	1 mg/ml
Full name	Integrin beta3 Antibody
Synonyms	ITGB3; GP3A; Integrin beta-3; Platelet membrane glycoprotein IIIa; GPIIIa; CD antigen CD61

This product is for research use only, not for use in human, therapeutic or diagnostic procedure.

Background

Integrin beta-3 encoded by ITGB3 is the integrin beta chain beta 3. Integrins are integral cell-surface proteins composed of an alpha chain and a beta chain. A given chain may combine with multiple partners resulting in different integrins. Integrin beta 3 is found along with the alpha IIb chain in platelets. Integrins are known to participate in cell adhesion as well as cell-surface mediated signalling.

Recommended Dilution

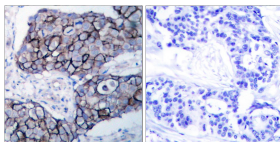
WB: 1: 500 - 1: 2000

IHC: 1: 100 - 1: 300

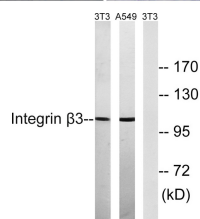
ELISA: 1: 10000

Not yet tested in other applications.

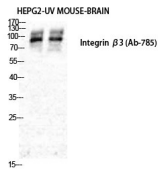
Images



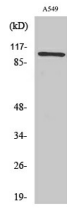
Immunohistochemistry analysis of paraffin-embedded human breast carcinoma tissue, using Integrin beta3 Antibody. The picture on the right is blocked with the synthesized peptide.



Western blot analysis of lysates from NIH/3T3 and A549 cells, using Integrin beta3 Antibody. The lane on the right is blocked with the synthesized peptide.



Western Blot analysis of various cells using Integrin β 3 Polyclonal Antibody diluted at 1:500



Western Blot analysis of NIH-3T3 cells using Integrin β 3 Polyclonal Antibody diluted at 1:500

Storage

-20°C for one year

501 Changsheng S Rd, Nanhu Dist, Jiaxing, Zhejiang, China

Tel: 86 21 31007137 | E-mail: save@bt-laboratory.com | www.bt-laboratory.com