

Integrin Beta5 Polyclonal Antibody

Description

Product type	Primary Antibody
Code	BT-AP04592
Host	Rabbit
Isotype	IgG
Size	20ul, 50ul, 100ul
Immunogen	The antiserum was produced against synthesized peptide derived from human Integrin beta5. AA range:721-770
Mol wt	88054
Species reactivity	Human, Mouse, Rat, Monkey
Clonality	Polyclonal
Recommended application	WB, ELISA
Concentration	1 mg/ml
Full name	Integrin beta5 Antibody
Synonyms	ITGB5; Integrin beta-5

This product is for research use only, not for use in human, therapeutic or diagnostic procedure.

Background

ITGB5 is a Protein Coding gene. Integrin beta-5 is a receptor for fibronectin. It recognizes the sequence R-G-D in its ligand. Integrin beta-5 acts as a receptor for adenovirus type C. Diseases associated with ITGB5 include villous adenocarcinoma and localized scleroderma. Among its related pathways are Sertoli-Sertoli Cell Junction Dynamics and Degradation of the extracellular matrix. Gene Ontology (GO) annotations related to this gene include receptor activity and integrin binding. An important paralog of this gene is ITGB4.

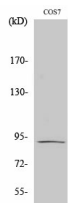
Recommended Dilution

WB: 1: 500 - 1: 2000

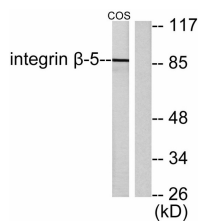
ELISA: 1: 20000

Not yet tested in other applications.

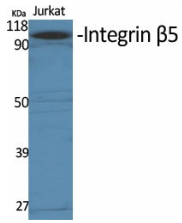
Images



Western Blot analysis of COS7 cells using Integrin beta5 Polyclonal Antibody diluted at 1:1000



Western blot analysis of lysates from COS7 cells, using Integrin beta5 Antibody. The lane on the right is blocked with the synthesized peptide.



Western Blot analysis of various cells using Integrin β 5 Polyclonal Antibody diluted at 1:1000

Storage

-20°C for one year

501 Changsheng S Rd, Nanhu Dist, Jiaxing, Zhejiang, China

Tel: 86 21 31007137 | E-mail: save@bt-laboratory.com | www.bt-laboratory.com