

## INTS2 Polyclonal Antibody

### Description

<b>Product type</b>	Primary Antibody
<b>Code</b>	BT-AP04596
<b>Host</b>	Rabbit
<b>Isotype</b>	IgG
<b>Size</b>	20ul, 50ul, 100ul
<b>Immunogen</b>	The antiserum was produced against synthesized peptide derived from human INTS2. AA range:201-250
<b>Mol wt</b>	134346
<b>Species reactivity</b>	Human, Mouse, Rat
<b>Clonality</b>	Polyclonal
<b>Recommended application</b>	WB, ELISA
<b>Concentration</b>	1 mg/ml
<b>Full name</b>	INTS2 Antibody
<b>Synonyms</b>	INTS2; KIAA1287; Integrator complex subunit 2; Int2

This product is for research use only, not for use in human, therapeutic or diagnostic procedure.

### Background

INTS2 (integrator complex subunit 2) is a subunit of the Integrator complex, which associates with the C-terminal domain of RNA polymerase II large subunit (POLR2A; MIM 180660) and mediates 3-prime end processing of small nuclear RNAs U1 (RNU1; MIM 180680) and U2 (RNU2; MIM 180690).

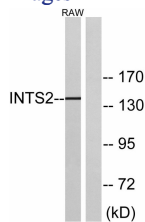
### Recommended Dilution

WB: 1: 500 - 1: 2000

ELISA: 1: 20000

Not yet tested in other applications.

### Images



Western blot analysis of lysates from RAW264.7 cells, using INTS2 Antibody. The lane on the right is blocked with the synthesized peptide.

### Storage

-20°C for one year