

## S26A8 Rabbit Polyclonal Antibody

### Description

Product type	Primary Antibody
Code	BT-AP04599
Host	Rabbit
Isotype	IgG
Size	20ul, 50ul, 100ul
Immunogen	Synthesized peptide derived from human S26A8
Mol wt	N/A
Species reactivity	Human, Mouse
Clonality	Polyclonal
Recommended application	WB
Concentration	1 mg/ml
Full name	S26A8
Synonyms	S26A8; Testis anion transporter 1; Anion exchange transporter; Solute carrier family 26 member 8

This product is for research use only, not for use in human, therapeutic or diagnostic procedure.

### Background

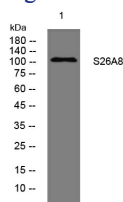
This gene encodes a member of the SLC26 gene family of anion transporters. Family members are well conserved in gene structure and protein length yet have markedly different tissue expression patterns. The expression of this gene appears to be restricted to spermatocytes. Alternatively spliced transcript variants that encode different isoforms have been described.

### Recommended Dilution

WB: 1: 500 - 1: 2000

Not yet tested in other applications.

### Images



Western blot analysis of lysates from U2OS cells, primary antibody was diluted at 1:1000, 4°C overnight

### Storage

-20°C for 1 year

501 Changsheng S Rd, Nanhu Dist, Jiaxing, Zhejiang, China

Tel: 86 21 31007137 | E-mail: [save@bt-laboratory.com](mailto:save@bt-laboratory.com) | [www.bt-laboratory.com](http://www.bt-laboratory.com)