

## IP Receptor Polyclonal Antibody

### Description

<b>Product type</b>	Primary Antibody
<b>Code</b>	BT-AP04600
<b>Host</b>	Rabbit
<b>Isotype</b>	IgG
<b>Size</b>	20ul, 50ul, 100ul
<b>Immunogen</b>	The antiserum was produced against synthesized peptide derived from human Prostacyclin Receptor. AA range:198-247
<b>Mol wt</b>	40956
<b>Species reactivity</b>	Human
<b>Clonality</b>	Polyclonal
<b>Recommended application</b>	WB, IF, ELISA
<b>Concentration</b>	1 mg/ml
<b>Full name</b>	IP Receptor Antibody
<b>Synonyms</b>	PTGIR; PRIPR; Prostacyclin receptor; Prostaglandin I2 receptor; PGI receptor; PGI2 receptor; Prostanoid IP receptor

This product is for research use only, not for use in human, therapeutic or diagnostic procedure.

### Background

The protein encoded by PTGIR (prostaglandin I2 (prostacyclin) receptor (IP)) is a member of the G-protein coupled receptor family 1 and has been shown to be a receptor for prostacyclin. Prostacyclin, the major product of cyclooxygenase in macrovascular endothelium, elicits a potent vasodilation and inhibition of platelet aggregation through binding to this receptor.

### Recommended Dilution

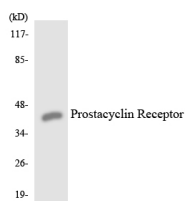
WB: 1: 500 - 1: 2000

IF: 1: 200 - 1: 1000

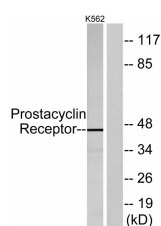
ELISA: 1: 10000

Not yet tested in other applications.

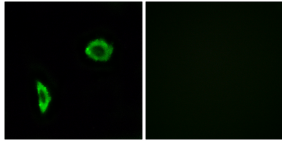
### Images



Western blot analysis of the lysates from HUVEC cells using Prostacyclin Receptor antibody.



Western blot analysis of lysates from K562 cells, using Prostacyclin Receptor Antibody. The lane on the right is blocked with the synthesized peptide.



Immunofluorescence analysis of LOVO cells, using Prostacyclin Receptor Antibody. The picture on the right is blocked with the synthesized peptide.

### Storage

-20°C for one year

501 Changsheng S Rd, Nanhu Dist, Jiaxing, Zhejiang, China

Tel: 86 21 31007137 | E-mail: [save@bt-laboratory.com](mailto:save@bt-laboratory.com) | [www.bt-laboratory.com](http://www.bt-laboratory.com)