

## IP3KA Polyclonal Antibody

### Description

<b>Product type</b>	Primary Antibody
<b>Code</b>	BT-AP04602
<b>Host</b>	Rabbit
<b>Isotype</b>	IgG
<b>Size</b>	20ul, 50ul, 100ul
<b>Immunogen</b>	The antiserum was produced against synthesized peptide derived from human IP3KA. AA range:396-445
<b>Mol wt</b>	51009
<b>Species reactivity</b>	Human, Mouse, Rat
<b>Clonality</b>	Polyclonal
<b>Recommended application</b>	WB, IF, ELISA
<b>Concentration</b>	1 mg/ml
<b>Full name</b>	IP3KA Antibody
<b>Synonyms</b>	ITPKA; Inositol-trisphosphate 3-kinase A; Inositol 1; 4,5-trisphosphate 3-kinase A; IP3 3-kinase A; IP3K A; InsP 3-kinase A

This product is for research use only, not for use in human, therapeutic or diagnostic procedure.

### Background

Regulates inositol phosphate metabolism by phosphorylation of second messenger inositol 1,4,5-trisphosphate to Ins(1,3,4,5)P<sub>4</sub>. The activity of the inositol 1,4,5-trisphosphate 3-kinase is responsible for regulating the levels of a large number of inositol polyphosphates that are important in cellular signaling. Both calcium/calmodulin and protein phosphorylation mechanisms control its activity. It is also a substrate for the cyclic AMP-dependent protein kinase, calcium/calmodulin- dependent protein kinase II, and protein kinase C in vitro.

### Recommended Dilution

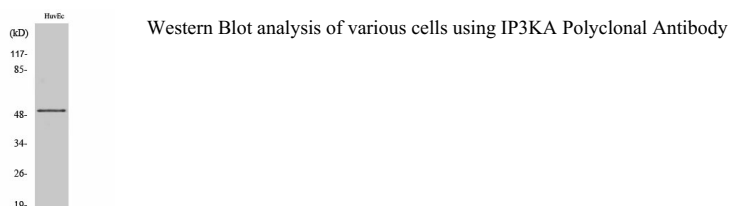
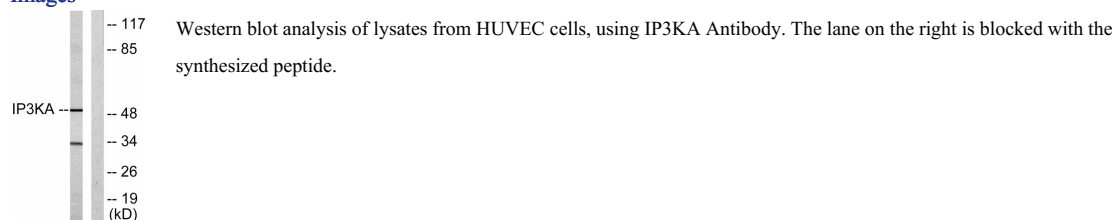
WB: 1: 500 - 1: 2000

IF: 1: 200 - 1: 1000

ELISA: 1: 20000

Not yet tested in other applications.

### Images



## Storage

-20°C for one year

501 Changsheng S Rd, Nanhu Dist, Jiaxing, Zhejiang, China

Tel: 86 21 31007137 | E-mail: [save@bt-laboratory.com](mailto:save@bt-laboratory.com) | [www.bt-laboratory.com](http://www.bt-laboratory.com)